

## CHP2 Polyclonal Antibody

### Description

<b>Product type</b>	Primary Antibody
<b>Code</b>	BT-AP01780
<b>Host</b>	Rabbit
<b>Isotype</b>	IgG
<b>Size</b>	20ul, 50ul, 100ul
<b>Immunogen</b>	The antiserum was produced against synthesized peptide derived from human CHP2. AA range:101-150
<b>Mol wt</b>	22452
<b>Species reactivity</b>	Human, Mouse, Rat
<b>Clonality</b>	Polyclonal
<b>Recommended application</b>	WB, ELISA
<b>Concentration</b>	1 mg/ml
<b>Full name</b>	CHP2 Antibody
<b>Synonyms</b>	CHP2; HCA520; Calcineurin B homologous protein 2; Hepatocellular carcinoma-associated antigen 520

**This product is for research use only, not for use in human, therapeutic or diagnostic procedure.**

### Background

CHP2 product is a small calcium-binding protein that regulates cell pH by controlling plasma membrane-type Na<sup>+</sup>/H<sup>+</sup> exchange activity. Calcineurin like EF-hand protein 2 shares sequence similarity with calcineurin B and can bind to and stimulate the protein phosphatase activity of calcineurin A (CnA) and functions in the calcineurin/NFAT (nuclear factor of activated T cells) signaling pathway. Another member of the CHP subfamily, Calcineurin B homologous protein 1, is located on Chromosome 15 and is an inhibitor of calcineurin activity and has a genetic phenotype associated with Parkinson's Disease (OMIM:606988). CHP2 was initially identified as a tumor-associated antigen and was previously referred to as Hepatocellular carcinoma-associated antigen 520.

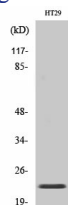
### Recommended Dilution

WB: 1: 500 - 1: 2000

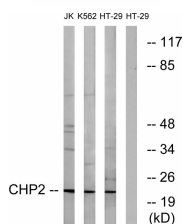
ELISA: 1: 40000

Not yet tested in other applications.

### Images



Western Blot analysis of various cells using CHP2 Polyclonal Antibody



Western blot analysis of lysates from HT-29, K562, and Jurkat cells, using CHP2 Antibody. The lane on the right is blocked with the synthesized peptide.

## Storage

-20°C for one year

501 Changsheng S Rd, Nanhu Dist, Jiaxing, Zhejiang, China

Tel: 86 21 31007137 | E-mail: [save@bt-laboratory.com](mailto:save@bt-laboratory.com) | [www.bt-laboratory.com](http://www.bt-laboratory.com)