

CHRAC15 Polyclonal Antibody

Description

Product type	Primary Antibody
Code	BT-AP01782
Host	Rabbit
Isotype	IgG
Size	20ul, 50ul, 100ul
Immunogen	The antiserum was produced against synthesized peptide derived from human CHRC1. AA range:81-130
Mol wt	14711
Species reactivity	Human, Mouse
Clonality	Polyclonal
Recommended application	IHC-p, ELISA
Concentration	1 mg/ml
Full name	CHRAC15 Antibody
Synonyms	CHRAC1; CHRAC15; Chromatin accessibility complex protein 1; CHRAC-1; Chromatin accessibility complex 15 kDa protein; CHRAC-15; HuCHRAC15; DNA polymerase epsilon subunit p15

This product is for research use only, not for use in human, therapeutic or diagnostic procedure.

Background

CHRAC1 is a histone-fold protein that interacts with other histone-fold proteins to bind DNA in a sequence-independent manner. These histone-fold protein dimers combine within larger enzymatic complexes for DNA transcription, replication, and packaging.

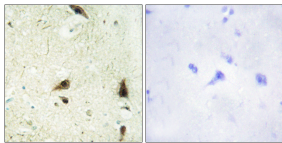
Recommended Dilution

IHC: 1: 100 - 1: 300

ELISA: 1: 5000

Not yet tested in other applications.

Images



Immunohistochemistry analysis of paraffin-embedded human brain tissue, using CHRC1 Antibody. The picture on the right is blocked with the synthesized peptide.

Storage

-20°C for one year

501 Changsheng S Rd, Nanhu Dist, Jiaxing, Zhejiang, China

Tel: 86 21 31007137 | E-mail: save@bt-laboratory.com | www.bt-laboratory.com