

CHST13 Polyclonal Antibody

Description

Product type	Primary Antibody
Code	BT-AP01785
Host	Rabbit
Isotype	IgG
Size	20ul, 50ul, 100ul
Immunogen	The antiserum was produced against synthesized peptide derived from human CHST13. AA range:211-260
Mol wt	38920
Species reactivity	Human
Clonality	Polyclonal
Recommended application	WB, IHC-p, ELISA
Concentration	1 mg/ml
Full name	CHST13 Antibody
Synonyms	CHST13; Carbohydrate sulfotransferase 13; Chondroitin 4-O-sulfotransferase 3; Chondroitin 4-sulfotransferase 3; C4ST-3; C4ST3

This product is for research use only, not for use in human, therapeutic or diagnostic procedure.

Background

Carbohydrate sulfotransferase 13 encoded by CHST13 belongs to the sulfotransferase 2 family. It is localized to the golgi membrane, and catalyzes the transfer of sulfate to the C4 hydroxyl of beta-1,4-linked N-acetylgalactosamine (GalNAc) flanked by glucuronic acid residue in chondroitin. Chondroitin sulfate constitutes the predominant proteoglycan present in cartilage and is distributed on the surfaces of many cells and extracellular matrices.

Recommended Dilution

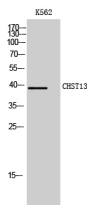
WB: 1: 500 - 1: 2000

IHC: 1: 100 - 1: 300

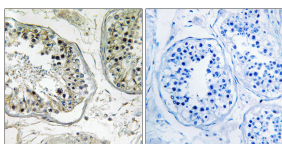
ELISA: 1: 40000

Not yet tested in other applications.

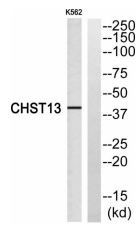
Images



Western Blot analysis of K562 cells using CHST13 Polyclonal Antibody



Immunohistochemistry analysis of paraffin-embedded human testis, using CHST13 Antibody. The lane on the right is blocked with the CHST13 peptide.



Western blot analysis of CHST13 Antibody. The lane on the right is blocked with the CHST13 peptide.

Storage

-20°C for one year

501 Changsheng S Rd, Nanhu Dist, Jiaxing, Zhejiang, China

Tel: 86 21 31007137 | E-mail: save@bt-laboratory.com | www.bt-laboratory.com