

CHST6 Polyclonal Antibody

Description

Product type	Primary Antibody
Code	BT-AP01789
Host	Rabbit
Isotype	IgG
Size	20ul, 50ul, 100ul
Immunogen	The antiserum was produced against synthesized peptide derived from human CHST6. AA range:331-380
Mol wt	44099
Species reactivity	Human
Clonality	Polyclonal
Recommended application	IF, ELISA
Concentration	1 mg/ml
Full name	CHST6 Antibody
Synonyms	CHST6; Carbohydrate sulfotransferase 6; Corneal N-acetylglucosamine-6-O-sulfotransferase; C-GlcNAc6ST; hCGn6ST; Galactose/N-acetylglucosamine/N-acetylglucosamine 6-O-sulfotransferase 4-beta; GST4-beta

This product is for research use only, not for use in human, therapeutic or diagnostic procedure.

Background

The protein encoded by CHST6 is an enzyme that catalyzes the transfer of a sulfate group to the GlcNAc residues of keratan. Keratan sulfate helps maintain corneal transparency. Defects in this gene are a cause of macular corneal dystrophy (MCD).

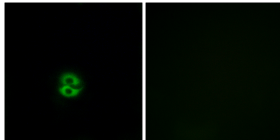
Recommended Dilution

IF: 1: 200 - 1: 1000

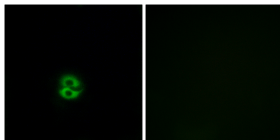
ELISA: 1: 20000

Not yet tested in other applications.

Images



Immunofluorescence analysis of A549 cells, using CHST6 Antibody. The picture on the right is blocked with the synthesized peptide.



Immunofluorescence analysis of A549 cells, using CHST6 Antibody. The picture on the right is blocked with the synthesized peptide.

Storage

-20°C for one year