

## CHST9 Polyclonal Antibody

### Description

Product type	Primary Antibody
Code	BT-AP01790
Host	Rabbit
Isotype	IgG
Size	20ul, 50ul, 100ul
Immunogen	The antiserum was produced against synthesized peptide derived from human CHST9. AA range:361-410
Mol wt	51482
Species reactivity	Human, Mouse
Clonality	Polyclonal
Recommended application	IHC-p, IF, ELISA
Concentration	1 mg/ml
Full name	CHST9 Antibody
Synonyms	CHST9; Carbohydrate sulfotransferase 9; GalNAc-4-O-sulfotransferase 2; GalNAc-4-ST2; GalNAc4ST-2; N-acetylgalactosamine-4-O-sulfotransferase 2

This product is for research use only, not for use in human, therapeutic or diagnostic procedure.

### Background

The protein encoded by CHST9 (carbohydrate sulfotransferase 9) belongs to the sulfotransferase 2 family. It is localized to the golgi membrane, and catalyzes the transfer of sulfate to position 4 of non-reducing N-acetylgalactosamine (GalNAc) residues in both N-glycans and O-glycans. Sulfate groups on carbohydrates confer highly specific functions to glycoproteins, glycolipids, and proteoglycans, and are critical for cell-cell interaction, signal transduction, and embryonic development. Alternatively spliced transcript variants have been described for CHST9.

### Recommended Dilution

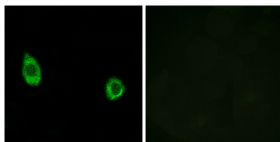
IHC: 1: 100 - 1: 300

IF: 1: 200 - 1: 1000

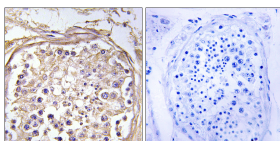
ELISA: 1: 20000

Not yet tested in other applications.

### Images



Immunofluorescence analysis of HUVEC cells, using CHST9 Antibody. The picture on the right is blocked with the synthesized peptide.



Immunohistochemistry analysis of paraffin-embedded human testis tissue, using CHST9 Antibody. The picture on the right is blocked with the synthesized peptide.

### Storage

-20°C for one year

501 Changsheng S Rd, Nanhu Dist, Jiaxing, Zhejiang, China

Tel: 86 21 31007137 | E-mail: [save@bt-laboratory.com](mailto:save@bt-laboratory.com) | [www.bt-laboratory.com](http://www.bt-laboratory.com)