

CHSY1 Polyclonal Antibody

Description

Product type	Primary Antibody
Code	BT-AP01795
Host	Rabbit
Isotype	IgG
Size	20ul, 50ul, 100ul
Immunogen	The antiserum was produced against synthesized peptide derived from human CHSY1. AA range:341-390
Mol wt	91784
Species reactivity	Human, Mouse
Clonality	Polyclonal
Recommended application	WB, IHC-p, ELISA
Concentration	1 mg/ml
Full name	CHSY1 Antibody
Synonyms	CHSY1; CHSY; CSS1; KIAA0990; Chondroitin sulfate synthase 1; Chondroitin glucuronyltransferase 1; Chondroitin synthase 1; ChSy-1; Glucuronosyl-N-acetylgalactosaminyl-proteoglycan 4-beta-N-acetylgalact

This product is for research use only, not for use in human, therapeutic or diagnostic procedure.

Background

CHSY1 encodes a member of the chondroitin N-acetylgalactosaminyltransferase family. These enzymes possess dual glucuronyltransferase and galactosaminyltransferase activity and play critical roles in the biosynthesis of chondroitin sulfate, a glycosaminoglycan involved in many biological processes including cell proliferation and morphogenesis. Decreased expression of CHSY1 may play a role in colorectal cancer, and mutations in CHSY1 are a cause of temtamy preaxial brachydactyly syndrome.

Recommended Dilution

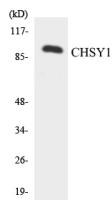
WB: 1: 500 - 1: 2000

IHC: 1: 100 - 1: 300

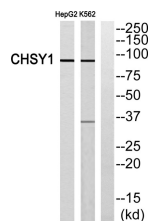
ELISA: 1: 10000

Not yet tested in other applications.

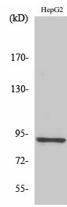
Images



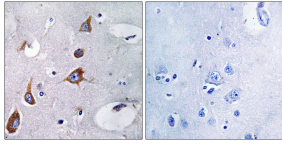
Western blot analysis of the lysates from HepG2 cells using CHSY1 antibody.



Western blot analysis of CHSY1 Antibody. The lane on the right is blocked with the CHSY1 peptide.



Western Blot analysis of various cells using CHSY1 Polyclonal Antibody



Immunohistochemistry analysis of paraffin-embedded human brain, using CHSY1 Antibody. The lane on the right is blocked with the CHSY1 peptide.

Storage

-20°C for one year

501 Changsheng S Rd, Nanhu Dist, Jiaxing, Zhejiang, China

Tel: 86 21 31007137 | E-mail: save@bt-laboratory.com | www.bt-laboratory.com