

Chymase Polyclonal Antibody

Description

Product type	Primary Antibody
Code	BT-AP01797
Host	Rabbit
Isotype	IgG
Size	20ul, 50ul, 100ul
Immunogen	Synthesized peptide derived from the Internal region of human Chymase.
Mol wt	27325
Species reactivity	Human
Clonality	Polyclonal
Recommended application	WB, ELISA
Concentration	1 mg/ml
Full name	Chymase Antibody
Synonyms	CMA1; CYH; CYM; Chymase; Alpha-chymase; Mast cell protease I

This product is for research use only, not for use in human, therapeutic or diagnostic procedure.

Background

CMA1 encodes a chymotryptic serine proteinase that belongs to the peptidase family S1. It is expressed in mast cells and is thought to function in the degradation of the extracellular matrix, the regulation of submucosal gland secretion, and the generation of vasoactive peptides. In the heart and blood vessels, this protein, rather than angiotensin converting enzyme, is largely responsible for converting angiotensin I to the vasoactive peptide angiotensin II. Alternative splicing results in multiple variants.

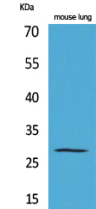
Recommended Dilution

WB: 1: 500 - 1: 2000

ELISA: 1: 20000

Not yet tested in other applications.

Images



Western Blot analysis of mouse lung cells using Chymase Polyclonal Antibody. Secondary antibody was diluted at 1:20000

Storage

-20°C for one year