

CIB2 Polyclonal Antibody

Description

Product type	Primary Antibody
Code	BT-AP01798
Host	Rabbit
Isotype	IgG
Size	20ul, 50ul, 100ul
Immunogen	The antiserum was produced against synthesized peptide derived from human CIB2. AA range:21-70
Mol wt	21644
Species reactivity	Human, Mouse, Rat
Clonality	Polyclonal
Recommended application	IHC-p, ELISA
Concentration	1 mg/ml
Full name	CIB2 Antibody
Synonyms	CIB2; KIP2; Calcium and integrin-binding family member 2; Kinase-interacting protein 2; KIP 2

This product is for research use only, not for use in human, therapeutic or diagnostic procedure.

Background

The calcium and integrin binding family member 2 encoded by CIB2 is similar to that of KIP/CIB, calcineurin B, and calmodulin. The encoded protein is a calcium-binding regulatory protein that interacts with DNA-dependent protein kinase catalytic subunits (DNA-PKcs), and it is involved in photoreceptor cell maintenance. Mutations in this gene cause deafness, autosomal recessive, 48 (DFNB48), and also Usher syndrome 1J (USH1J). Alternative splicing results in multiple transcript variants.

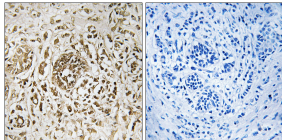
Recommended Dilution

IHC: 1: 100 - 1: 300

ELISA: 1: 5000

Not yet tested in other applications.

Images



Immunohistochemistry analysis of paraffin-embedded human breast carcinoma tissue, using CIB2 Antibody. The picture on the right is blocked with the synthesized peptide.

Storage

-20°C for one year