

CIB3 Polyclonal Antibody

Description

Product type	Primary Antibody
Code	BT-AP01799
Host	Rabbit
Isotype	IgG
Size	20ul, 50ul, 100ul
Immunogen	The antiserum was produced against synthesized peptide derived from human CIB3. AA range:138-187
Mol wt	21874
Species reactivity	Human, Mouse
Clonality	Polyclonal
Recommended application	WB, ELISA
Concentration	1 mg/ml
Full name	CIB3 Antibody
Synonyms	CIB3; KIP3; Calcium and integrin-binding family member 3; Kinase-interacting protein 3; KIP 3

This product is for research use only, not for use in human, therapeutic or diagnostic procedure.

Background

CIB3 product shares a high degree of sequence similarity with DNA-dependent protein kinase catalytic subunit-interacting protein 2 in human and mouse, and like them may bind the catalytic subunit of DNA-dependent protein kinases. The exact function of this gene is not known. Alternative splicing results in multiple transcript variants.

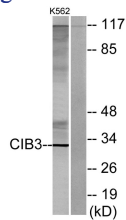
Recommended Dilution

WB: 1: 500 - 1: 2000

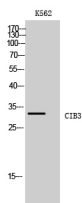
ELISA: 1: 20000

Not yet tested in other applications.

Images



Western blot analysis of lysates from K562 cells, using CIB3 Antibody. The lane on the right is blocked with the synthesized peptide.



Western Blot analysis of K562 cells using CIB3 Polyclonal Antibody

Storage

-20°C for one year

