

VASP(Phospho Ser157) Polyclonal Antibody

Description

Product type	Primary Antibody
Code	BT-AP01800
Host	Rabbit
Isotype	IgG
Size	20ul, 50ul, 100ul
Immunogen	The antiserum was produced against synthesized peptide derived from human VASP around the phosphorylation site of Ser157. AA range:124-173
Mol wt	39699
Species reactivity	Human, Mouse, Rat, Monkey
Clonality	Polyclonal
Recommended application	WB, IHC-p, IF, ELISA
Concentration	1 mg/ml
Full name	Vasodilator-stimulated phosphoprotein
Synonyms	Vasodilator-stimulated phosphoprotein; VASP; Vasodilator-stimulated phosphoprotein; VASP

This product is for research use only, not for use in human, therapeutic or diagnostic procedure.

Background

Vasodilator-stimulated phosphoprotein (VASP) is a member of the Ena-VASP protein family. Ena-VASP family members contain an EHV1 N-terminal domain that binds proteins containing E/DFPPPPXD/E motifs and targets Ena-VASP proteins to focal adhesions. In the mid-region of the protein family members have a proline-rich domain that binds SH3 and WW domain-containing proteins. Their C-terminal EVH2 domain mediates tetramerization and binds both G and F actin. VASP is associated with filamentous actin formation and likely plays a widespread role in cell adhesion and motility. VASP may also be involved in the intracellular signaling pathways that regulate integrin-extracellular matrix interactions. VASP is regulated by the cyclic nucleotide-dependent kinases PKA and PKG.

Recommended Dilution

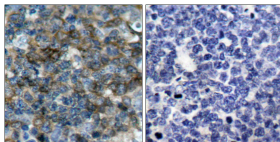
WB: 1: 500 - 1: 2000

IHC-p: 1: 100 - 1: 300

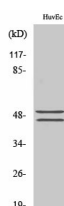
ELISA: 1: 5000

Not yet tested in other applications.

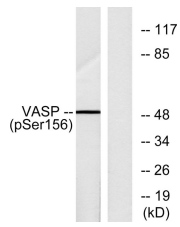
Images



Immunohistochemistry analysis of paraffin-embedded human tonsil, using VASP (Phospho-Ser157) Antibody. The picture on the right is blocked with the phospho peptide.



Western Blot analysis of various cells using Phospho-VASP (S157) Polyclonal Antibody



Western blot analysis of lysates from NIH/3T3 cells treated with forskolin 40 μ M 30', using VASP (Phospho-Ser157) Antibody. The lane on the right is blocked with the phospho peptide.

Storage

-20°C for 1 year

501 Changsheng S Rd, Nanhu Dist, Jiaxing, Zhejiang, China

Tel: 86 21 31007137 | E-mail: save@bt-laboratory.com | www.bt-laboratory.com