

CIDE-3 Polyclonal Antibody

Description

Product type	Primary Antibody
Code	BT-AP01802
Host	Rabbit
Isotype	IgG
Size	20ul, 50ul, 100ul
Immunogen	The antiserum was produced against synthesized peptide derived from human CIDE. AA range:189-238
Mol wt	26754
Species reactivity	Human
Clonality	Polyclonal
Recommended application	IHC-p, IF, ELISA
Concentration	1 mg/ml
Full name	CIDE-3 Antibody
Synonyms	CIDE; FSP27; Cell death activator CIDE-3; Cell death-inducing DFFA-like effector protein C; Fat-specific protein FSP27 homolog

This product is for research use only, not for use in human, therapeutic or diagnostic procedure.

Background

CIDE (cell death inducing DFFA like effector c) encodes a member of the cell death-inducing DNA fragmentation factor-like effector family. Members of this family play important roles in apoptosis. The encoded protein promotes lipid droplet formation in adipocytes and may mediate adipocyte apoptosis. CIDE is regulated by insulin and its expression is positively correlated with insulin sensitivity. Mutations in CIDE may contribute to insulin resistant diabetes. A pseudogene of CIDE is located on the short arm of chromosome 3. Alternatively spliced transcript variants that encode different isoforms have been observed for CIDE.

Recommended Dilution

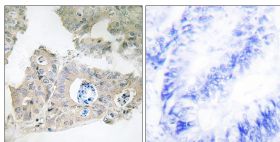
IHC: 1: 100 - 1: 300

IF: 1: 200 - 1: 1000

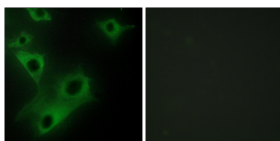
ELISA: 1: 5000

Not yet tested in other applications.

Images



Immunohistochemistry analysis of paraffin-embedded human colon carcinoma tissue, using CIDE Antibody. The picture on the right is blocked with the synthesized peptide.



Immunofluorescence analysis of HeLa cells, using CIDE Antibody. The picture on the right is blocked with the synthesized peptide.

Storage

-20°C for one year

501 Changsheng S Rd, Nanhu Dist, Jiaxing, Zhejiang, China

Tel: 86 21 31007137 | E-mail: save@bt-laboratory.com | www.bt-laboratory.com