

Citron Polyclonal Antibody

Description

Product type	Primary Antibody
Code	BT-AP01813
Host	Rabbit
Isotype	IgG
Size	20ul, 50ul, 100ul
Immunogen	The antiserum was produced against synthesized peptide derived from human CTRO. AA range:1011-1060
Mol wt	231431
Species reactivity	Human, Mouse
Clonality	Polyclonal
Recommended application	IHC-p, ELISA
Concentration	1 mg/ml
Full name	Citron Antibody
Synonyms	CIT; CRIK; KIAA0949; STK21; Citron Rho-interacting kinase; CRIK; Serine/threonine-protein kinase 21

This product is for research use only, not for use in human, therapeutic or diagnostic procedure.

Background

CIT encodes a serine/threonine-protein kinase that functions in cell division. Together with the kinesin KIF14, this protein localizes to the central spindle and midbody, and functions to promote efficient cytokinesis. This protein is involved in central nervous system development. Polymorphisms in this gene are associated with bipolar disorder and risk for schizophrenia. Alternative splicing results in multiple transcript variants.

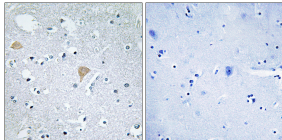
Recommended Dilution

IHC: 1: 100 - 1: 300

ELISA: 1: 40000

Not yet tested in other applications.

Images



Immunohistochemistry analysis of paraffin-embedded human brain tissue, using CTRO Antibody.
The picture on the right is blocked with the synthesized peptide.

Storage

-20°C for one year