

CK18 Polyclonal Antibody

Description

Product type	Primary Antibody
Code	BT-AP01816
Host	Rabbit
Isotype	IgG
Size	20ul, 50ul, 100ul
Immunogen	Recombinant Protein of Keratin type I cytoskeletal 18
Mol wt	47927
Species reactivity	Human
Clonality	Polyclonal
Recommended application	WB
Concentration	1 mg/ml
Full name	CK18 Antibody
Synonyms	KRT18; CYK18; PIG46; Keratin, type I cytoskeletal 18; Cell proliferation-inducing gene 46 protein; Cytokeratin-18; CK-18; Keratin-18; K18

This product is for research use only, not for use in human, therapeutic or diagnostic procedure.

Background

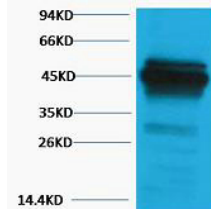
KRT18 encodes the type I intermediate filament chain keratin 18. Keratin 18, together with its filament partner keratin 8, are perhaps the most commonly found members of the intermediate filament gene family. They are expressed in single layer epithelial tissues of the body. Mutations in KRT18 have been linked to cryptogenic cirrhosis. Two transcript variants encoding the same protein have been found for KRT18.

Recommended Dilution

WB: 1: 1000 - 2000

Not yet tested in other applications.

Images



Western blot analysis of HeLa, Rabbit pAb diluted at 1:2000. Secondary antibody was diluted at 1:20000

Storage

-20°C for one year