

## CKR-2 Polyclonal Antibody

### Description

<b>Product type</b>	Primary Antibody
<b>Code</b>	BT-AP01822
<b>Host</b>	Rabbit
<b>Isotype</b>	IgG
<b>Size</b>	20ul, 50ul, 100ul
<b>Immunogen</b>	Synthesized peptide derived from CKR-2 . at AA range: 250-330
<b>Mol wt</b>	41915
<b>Species reactivity</b>	Mouse, Rat
<b>Clonality</b>	Polyclonal
<b>Recommended application</b>	WB, IF, ELISA
<b>Concentration</b>	1 mg/ml
<b>Full name</b>	CKR-2 Antibody
<b>Synonyms</b>	CCR2; CMKBR2; C-C chemokine receptor type 2; C-C CKR-2; CC-CKR-2; CCR-2; CCR2; Monocyte chemoattractant protein 1 receptor; MCP-1-R; CD antigen CD192

**This product is for research use only, not for use in human, therapeutic or diagnostic procedure.**

### Background

CCR2 (C-C Motif Chemokine Receptor 2) is a Protein Coding gene. Diseases associated with CCR2 include idiopathic anterior uveitis and cd3zeta deficiency. Among its related pathways are Signaling by GPCR and A-beta Pathways: uptake and Degradation. GO annotations related to this gene include G-protein coupled receptor activity and chemokine receptor activity. An important paralog of this gene is CCR9. receptor for the CCL2, CCL7 and CCL13 chemokines. Transduces a signal by increasing intracellular calcium ion levels. Alternative coreceptor with CD4 for HIV-1 infection. hemokine CC receptors (CCRs) predominantly recognize CC chemokines. CC chemokines are distinguished by having four conserved cysteines, with the first two cysteines being adjacent to each other. There are 10 chemokine CC receptors.

### Recommended Dilution

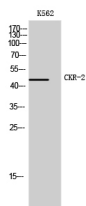
WB: 1: 500 - 1: 2000

IF: 1: 200 - 1: 1000

ELISA: 1: 5000

Not yet tested in other applications.

### Images



Western Blot analysis of K562 cells using CKR-2 Polyclonal Antibody

### Storage

-20°C for one year

