

CKR-4 Polyclonal Antibody

Description

Product type	Primary Antibody
Code	BT-AP01824
Host	Rabbit
Isotype	IgG
Size	20ul, 50ul, 100ul
Immunogen	The antiserum was produced against synthesized peptide derived from human CCR4. AA range:211-260
Mol wt	41403
Species reactivity	Human, Mouse, Rat
Clonality	Polyclonal
Recommended application	IF, ELISA
Concentration	1 mg/ml
Full name	CKR-4 Antibody
Synonyms	CCR4; CMKBR4; C-C chemokine receptor type 4; C-C CKR-4; CC-CCR-4; CCR-4; CCR4; K5-5; CD antigen CD194

This product is for research use only, not for use in human, therapeutic or diagnostic procedure.

Background

The C-C motif chemokine receptor 4 encoded by CCR4 belongs to the G-protein-coupled receptor family. It is a receptor for the CC chemokine - MIP-1, RANTES, TARC and MCP-1. Chemokines are a group of small polypeptide, structurally related molecules that regulate cell trafficking of various types of leukocytes. The chemokines also play fundamental roles in the development, homeostasis, and function of the immune system, and they have effects on cells of the central nervous system as well as on endothelial cells involved in angiogenesis or angiostasis.

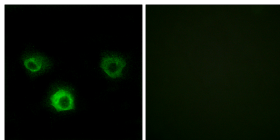
Recommended Dilution

IF: 1: 200 - 1: 1000

ELISA: 1: 40000

Not yet tested in other applications.

Images



Immunofluorescence analysis of HUVEC cells, using CCR4 Antibody. The picture on the right is blocked with the synthesized peptide.

Storage

-20°C for one year