

## ZAP-70(Phospho Tyr315) Polyclonal Antibody

### Description

<b>Product type</b>	Primary Antibody
<b>Code</b>	BT-AP01826
<b>Host</b>	Rabbit
<b>Isotype</b>	IgG
<b>Size</b>	20ul, 50ul, 100ul
<b>Immunogen</b>	The antiserum was produced against synthesized peptide derived from human ZAP-70 around the phosphorylation site of Tyr315. AA range:281-330
<b>Mol wt</b>	69872
<b>Species reactivity</b>	Human, Mouse
<b>Clonality</b>	Polyclonal
<b>Recommended application</b>	WB, IHC-p, IF, ELISA
<b>Concentration</b>	1 mg/ml
<b>Full name</b>	Tyrosine-protein kinase ZAP-70
<b>Synonyms</b>	Tyrosine-protein kinase ZAP-70; ZAP70; SRK; Tyrosine-protein kinase ZAP-70; 70 kDa zeta-chain associated protein; Syk-related tyrosine kinase

**This product is for research use only, not for use in human, therapeutic or diagnostic procedure.**

### Background

This gene encodes an enzyme belonging to the protein tyrosine kinase family| and it plays a role in T-cell development and lymphocyte activation. This enzyme| which is phosphorylated on tyrosine residues upon T-cell antigen receptor (TCR) stimulation| functions in the initial step of TCR-mediated signal transduction in combination with the Src family kinases| Lck and Fyn. This enzyme is also essential for thymocyte development. Mutations in this gene cause selective T-cell defect| a severe combined immunodeficiency disease characterized by a selective absence of CD8-positive T-cells. Two transcript variants that encode different isoforms have been found for this gene.

### Recommended Dilution

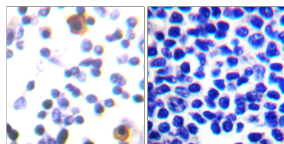
WB: 1: 500 - 1: 2000

IHC-p: 1: 100 - 1: 300

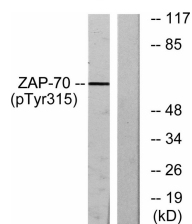
ELISA: 1: 10000

Not yet tested in other applications.

### Images



Immunohistochemistry analysis of paraffin-embedded human lymph node, using ZAP-70 (Phospho-Tyr315) Antibody. The picture on the right is blocked with the phospho peptide.



Western blot analysis of lysates from Jurkat cells treated with Ca<sup>+</sup> 40nM 30', using ZAP-70 (Phospho-Tyr315) Antibody. The lane on the right is blocked with the phospho peptide.

## Storage

-20°C for 1 year

501 Changsheng S Rd, Nanhu Dist, Jiaxing, Zhejiang, China

Tel: 86 21 31007137 | E-mail: [save@bt-laboratory.com](mailto:save@bt-laboratory.com) | [www.bt-laboratory.com](http://www.bt-laboratory.com)