

CLASP1 Polyclonal Antibody

Description

| | |
|--------------------------------|---|
| Product type | Primary Antibody |
| Code | BT-AP01835 |
| Host | Rabbit |
| Isotype | IgG |
| Size | 20ul, 50ul, 100ul |
| Immunogen | The antiserum was produced against synthesized peptide derived from human CLASP1. AA range:1171-1220 |
| Mol wt | 169451 |
| Species reactivity | Human, Mouse |
| Clonality | Polyclonal |
| Recommended application | WB, IHC-p, ELISA |
| Concentration | 1 mg/ml |
| Full name | CLASP1 Antibody |
| Synonyms | CLASP1; KIAA0622; MAST1; CLIP-associating protein 1; Cytoplasmic linker-associated protein 1; Multiple asters homolog 1; Protein Orbit homolog 1; hOrbit1 |

This product is for research use only, not for use in human, therapeutic or diagnostic procedure.

Background

CLASPs, such as CLASP1, are nonmotor microtubule-associated proteins that interact with CLIPs (e.g. CLIP170; MIM 179838). CLASP1 is involved in the regulation of microtubule dynamics at the kinetochore and throughout the spindle (Maiato et al. 2003 [PubMed 12837247]).

Recommended Dilution

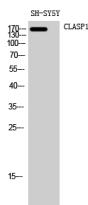
WB: 1: 500 - 1: 2000

IHC: 1: 100 - 1: 300

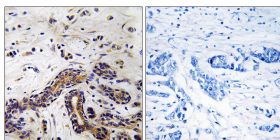
ELISA: 1: 40000

Not yet tested in other applications.

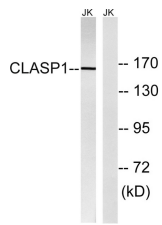
Images



Western Blot analysis of SH-SY5Y cells using CLASP1 Polyclonal Antibody diluted at 1:2000



Immunohistochemistry analysis of paraffin-embedded human testis tissue, using CLASP1 Antibody. The picture on the right is blocked with the synthesized peptide.



Western blot analysis of lysates from Jurkat cells, using CLASP1 Antibody. The lane on the right is blocked with the synthesized peptide.

Storage

-20°C for one year

501 Changsheng S Rd, Nanhu Dist, Jiaxing, Zhejiang, China

Tel: 86 21 31007137 | E-mail: save@bt-laboratory.com | www.bt-laboratory.com