

Claudin-1 Polyclonal Antibody

Description

Product type	Primary Antibody
Code	BT-AP01837
Host	Rabbit
Isotype	IgG
Size	20ul, 50ul, 100ul
Immunogen	The antiserum was produced against synthesized peptide derived from human Claudin 1. AA range:162-211
Mol wt	22744
Species reactivity	Human, Mouse, Rat
Clonality	Polyclonal
Recommended application	WB, ELISA
Concentration	1 mg/ml
Full name	Claudin-1 Antibody
Synonyms	CLDN1; CLD1; SEMP1; Claudin-1; Senescence-associated epithelial membrane protein

This product is for research use only, not for use in human, therapeutic or diagnostic procedure.

Background

Tight junctions represent one mode of cell-to-cell adhesion in epithelial or endothelial cell sheets, forming continuous seals around cells and serving as a physical barrier to prevent solutes and water from passing freely through the paracellular space. These junctions are comprised of sets of continuous networking strands in the outwardly facing cytoplasmic leaflet, with complementary grooves in the inwardly facing extracytoplasmic leaflet. The protein encoded by CLDN1, a member of the claudin family, is an integral membrane protein and a component of tight junction strands. Loss of function mutations result in neonatal ichthyosis-sclerosing cholangitis syndrome.

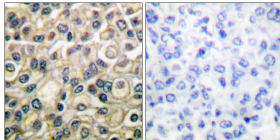
Recommended Dilution

WB: 1: 500 - 1: 2000

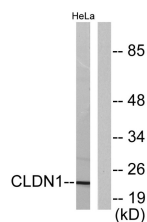
ELISA: 1: 20000

Not yet tested in other applications.

Images



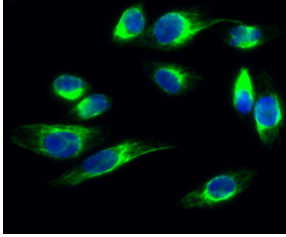
Immunohistochemistry analysis of paraffin-embedded human breast carcinoma tissue, using Claudin 1 Antibody. The picture on the right is blocked with the synthesized peptide.



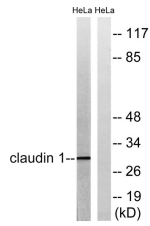
Western blot analysis of lysates from HeLa cells, using Claudin 1 Antibody. The lane on the right is blocked with the synthesized peptide.



Western Blot analysis of various cells using Claudin-1 Polyclonal Antibody diluted at 1:1000



Immunofluorescence analysis of HeLa cell. 1, Claudin-1 Polyclonal Antibody (green) was diluted at 1:200 (4° overnight). 2, Goat Anti Rabbit Alexa Fluor 488 was diluted at 1:1000 (room temperature, 50min). 3 DAPI (blue) 10min.



Western blot analysis of lysates from HeLa cells, treated with Hu 2nM 24h, using Claudin 1 Antibody. The lane on the right is blocked with the synthesized peptide.

Storage

-20°C for one year

501 Changsheng S Rd, Nanhu Dist, Jiaxing, Zhejiang, China

Tel: 86 21 31007137 | E-mail: save@bt-laboratory.com | www.bt-laboratory.com