

Claudin-11 Polyclonal Antibody

Description

Product type	Primary Antibody
Code	BT-AP01840
Host	Rabbit
Isotype	IgG
Size	20ul, 50ul, 100ul
Immunogen	The antiserum was produced against synthesized peptide derived from human Claudin 11. AA range:158-207
Mol wt	21993
Species reactivity	Human, Mouse, Rat
Clonality	Polyclonal
Recommended application	WB, ELISA
Concentration	1 mg/ml
Full name	Claudin-11 Antibody
Synonyms	CLDN11; OSP; OTM; Claudin-11; Oligodendrocyte-specific protein

This product is for research use only, not for use in human, therapeutic or diagnostic procedure.

Background

CLDN11 encodes a member of the claudin family. Claudins are integral membrane proteins and components of tight junction strands. Tight junction strands serve as a physical barrier to prevent solutes and water from passing freely through the paracellular space between epithelial or endothelial cell sheets, and also play critical roles in maintaining cell polarity and signal transductions. The protein encoded by CLDN11 is a major component of central nervous system (CNS) myelin and plays an important role in regulating proliferation and migration of oligodendrocytes. Mouse studies showed that the gene deficiency results in deafness and loss of the Sertoli cell epithelial phenotype in the testis. This protein claudin 11 is a tight junction protein at the human blood-testis barrier (BTB), and the BTB disruption is related to a dysfunction of this gene. Alternatively spliced transcript variants encoding different isoforms have been identified.

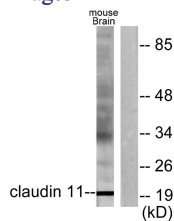
Recommended Dilution

WB: 1: 500 - 1: 2000

ELISA: 1: 10000

Not yet tested in other applications.

Images



Western blot analysis of lysates from mouse brain, using Claudin 11 Antibody. The lane on the right is blocked with the synthesized peptide.

Storage

-20°C for one year