

Claudin-17 Polyclonal Antibody

Description

Product type	Primary Antibody
Code	BT-AP01841
Host	Rabbit
Isotype	IgG
Size	20ul, 50ul, 100ul
Immunogen	Synthesized peptide derived from Claudin-17 . at AA range: 150-230
Mol wt	24603
Species reactivity	Human
Clonality	Polyclonal
Recommended application	WB, ELISA
Concentration	1 mg/ml
Full name	Claudin-17 Antibody
Synonyms	CLDN17; Claudin-17

This product is for research use only, not for use in human, therapeutic or diagnostic procedure.

Background

CLDN17 encodes a member of the claudin family. Claudins are integral membrane proteins and components of tight junction strands. Tight junction strands serve as a physical barrier to prevent solutes and water from passing freely through the paracellular space between epithelial or endothelial cell sheets, and also play critical roles in maintaining cell polarity and signal transductions. This gene is intronless and is clustered with CLDN8 on chromosome 21q22. 1.

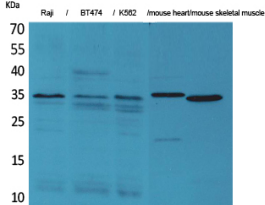
Recommended Dilution

WB: 1: 500 - 1: 2000

ELISA: 1: 20000

Not yet tested in other applications.

Images



Western Blot analysis of Raji, BT474, K562, mouse heart, mouse skeletal muscle cells using Claudin-17 Polyclonal Antibody. Secondary antibody was diluted at 1:20000

Storage

-20°C for one year