

Claudin-4 Polyclonal Antibody

Description

Product type	Primary Antibody
Code	BT-AP01846
Host	Rabbit
Isotype	IgG
Size	20ul, 50ul, 100ul
Immunogen	The antiserum was produced against synthesized peptide derived from human Claudin 4. AA range:160-209
Mol wt	22077
Species reactivity	Human
Clonality	Polyclonal
Recommended application	WB, IHC-p, ELISA
Concentration	1 mg/ml
Full name	Claudin-4 Antibody
Synonyms	CLDN4; CPER; CPETR1; WBSCR8; Claudin-4; Clostridium perfringens enterotoxin receptor; CPE-R; CPE-receptor; Williams-Beuren syndrome chromosomal region 8 protein

This product is for research use only, not for use in human, therapeutic or diagnostic procedure.

Background

Claudin 4 encoded by this intronless gene (CLDN4) belongs to the claudin family. Claudins are integral membrane proteins that are components of the epithelial cell tight junctions, which regulate movement of solutes and ions through the paracellular space. This protein is a high-affinity receptor for Clostridium perfringens enterotoxin (CPE) and may play a role in internal organ development and function during pre- and postnatal life. This gene is deleted in Williams-Beuren syndrome, a neurodevelopmental disorder affecting multiple systems.

Recommended Dilution

WB: 1: 500 - 1: 2000

IHC: 1: 100 - 1: 300

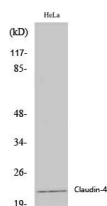
ELISA: 1: 5000

Not yet tested in other applications.

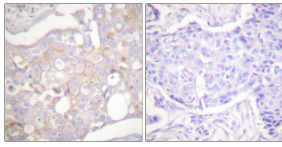
Images



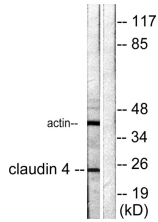
Western Blot analysis of HeLa cells using Claudin-4 Polyclonal Antibody diluted at 1:2000



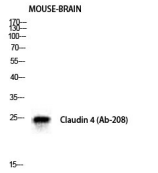
Western Blot analysis of various cells using Claudin-4 Polyclonal Antibody diluted at 1:2000



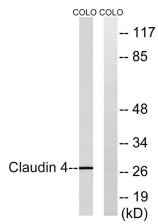
Immunohistochemistry analysis of paraffin-embedded human breast carcinoma tissue, using Claudin 4 Antibody. The picture on the right is blocked with the synthesized peptide.



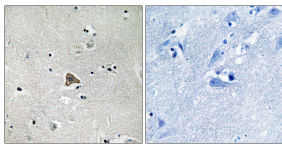
Western blot analysis of lysates from HeLa cells, using Claudin 4 Antibody. The lane on the right is blocked with the synthesized peptide.



Western Blot analysis of mouse-BRAIN cells using Claudin-4 Polyclonal Antibody diluted at 1:500



Western blot analysis of lysates from COLO cells, using Claudin 4 Antibody. The lane on the right is blocked with the synthesized peptide.



Immunohistochemistry analysis of paraffin-embedded human brain tissue, using Claudin 4 Antibody. The picture on the right is blocked with the synthesized peptide.

Storage

-20°C for one year

501 Changsheng S Rd, Nanhu Dist, Jiaxing, Zhejiang, China

Tel: 86 21 31007137 | E-mail: save@bt-laboratory.com | www.bt-laboratory.com