

Claudin-5 Polyclonal Antibody

Description

Product type	Primary Antibody
Code	BT-AP01848
Host	Rabbit
Isotype	IgG
Size	20ul, 50ul, 100ul
Immunogen	The antiserum was produced against synthesized peptide derived from human Claudin 5. AA range:169-218
Mol wt	23147
Species reactivity	Human, Mouse, Rat
Clonality	Polyclonal
Recommended application	WB, IHC-p, IF, ELISA
Concentration	1 mg/ml
Full name	Claudin-5 Antibody
Synonyms	CLDN5; AWAL; TMVCF; Claudin-5; Transmembrane protein deleted in VCFS; TMDVCF

This product is for research use only, not for use in human, therapeutic or diagnostic procedure.

Background

CLDN5 (claudin 5) encodes a member of the claudin family. Claudins are integral membrane proteins and components of tight junction strands. Tight junction strands serve as a physical barrier to prevent solutes and water from passing freely through the paracellular space between epithelial or endothelial cell sheets. Mutations in CLDN5 have been found in patients with velocardiofacial syndrome. Alternatively spliced transcript variants encoding the same protein have been found for CLDN5.

Recommended Dilution

WB: 1: 500 - 1: 2000

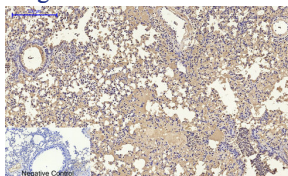
IHC: 1: 100 - 1: 300

IF: 1: 200 - 1: 1000

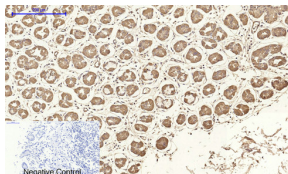
ELISA: 1: 40000

Not yet tested in other applications.

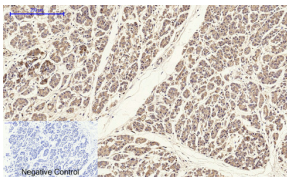
Images



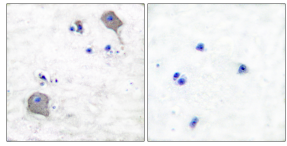
Immunohistochemical analysis of paraffin-embedded Mouse-lung tissue. 1,Claudin-5 Polyclonal Antibody was diluted at 1:200(4°C,overnight). 2, Sodium citrate pH 6.0 was used for antibody retrieval(>98°C,20min). 3,Secondary antibody was diluted at 1:200(room tempeRature, 30min). Negative control was used by secondary antibody only.



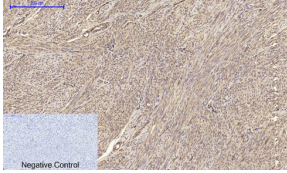
Immunohistochemical analysis of paraffin-embedded Human-stomach tissue. 1,Claudin-5 Polyclonal Antibody was diluted at 1:200(4°C,overnight). 2, Sodium citrate pH 6.0 was used for antibody retrieval(>98°C,20min). 3,Secondary antibody was diluted at 1:200(room tempeRature, 30min). Negative control was used by secondary antibody only.



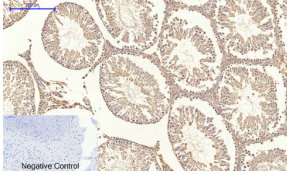
Immunohistochemical analysis of paraffin-embedded Human-stomach-cancer tissue. 1, Claudin-5 Polyclonal Antibody was diluted at 1:200(4°C, overnight). 2, Sodium citrate pH 6.0 was used for antibody retrieval(>98°C, 20min). 3, Secondary antibody was diluted at 1:200(room temperature, 30min). Negative control was used by secondary antibody only.



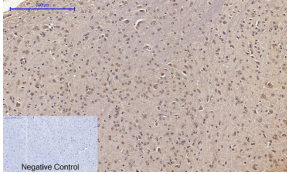
Immunohistochemistry analysis of paraffin-embedded human brain tissue, using Claudin 5 Antibody. The picture on the right is blocked with the synthesized peptide.



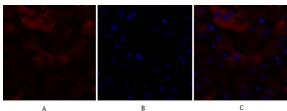
Immunohistochemical analysis of paraffin-embedded Human-uterus tissue. 1, Claudin-5 Polyclonal Antibody was diluted at 1:200(4°C, overnight). 2, Sodium citrate pH 6.0 was used for antibody retrieval(>98°C, 20min). 3, Secondary antibody was diluted at 1:200(room temperature, 30min). Negative control was used by secondary antibody only.



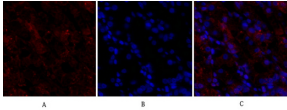
Immunohistochemical analysis of paraffin-embedded Rat-brain tissue. 1, Claudin-5 Polyclonal Antibody was diluted at 1:200(4°C, overnight). 2, Sodium citrate pH 6.0 was used for antibody retrieval(>98°C, 20min). 3, Secondary antibody was diluted at 1:200(room temperature, 30min). Negative control was used by secondary antibody only.



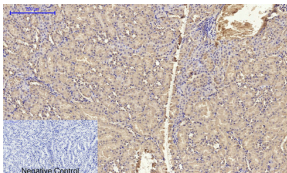
Immunohistochemical analysis of paraffin-embedded Mouse-brain tissue. 1, Claudin-5 Polyclonal Antibody was diluted at 1:200(4°C, overnight). 2, Sodium citrate pH 6.0 was used for antibody retrieval(>98°C, 20min). 3, Secondary antibody was diluted at 1:200(room temperature, 30min). Negative control was used by secondary antibody only.



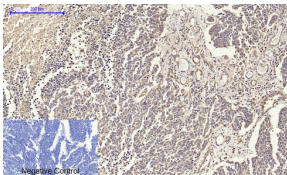
Immunofluorescence analysis of human-liver tissue. 1, Claudin-5 Polyclonal Antibody (red) was diluted at 1:200(4°C, overnight). 2, Cy3 labeled Secondary antibody was diluted at 1:300(room temperature, 50min). 3, Picture B: DAPI (blue) 10min. Picture A: Target. Picture B: DAPI. Picture C: merge of A+B



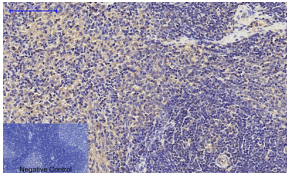
Immunofluorescence analysis of human-stomach tissue. 1, Claudin-5 Polyclonal Antibody (red) was diluted at 1:200(4°C, overnight). 2, Cy3 labeled Secondary antibody was diluted at 1:300(room temperature, 50min). 3, Picture B: DAPI (blue) 10min. Picture A: Target. Picture B: DAPI. Picture C: merge of A+B



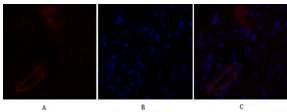
Immunohistochemical analysis of paraffin-embedded Mouse-kidney tissue. 1, Claudin-5 Polyclonal Antibody was diluted at 1:200(4°C, overnight). 2, Sodium citrate pH 6.0 was used for antibody retrieval(>98°C, 20min). 3, Secondary antibody was diluted at 1:200(room temperature, 30min). Negative control was used by secondary antibody only.



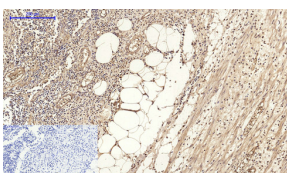
Immunohistochemical analysis of paraffin-embedded Human-lung-cancer tissue. 1, Claudin-5 Polyclonal Antibody was diluted at 1:200(4°C, overnight). 2, Sodium citrate pH 6.0 was used for antibody retrieval(>98°C, 20min). 3, Secondary antibody was diluted at 1:200(room temperature, 30min). Negative control was used by secondary antibody only.



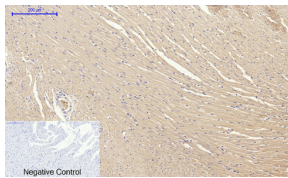
Immunohistochemical analysis of paraffin-embedded Rat-spleen tissue. 1, Claudin-5 Polyclonal Antibody was diluted at 1:200(4°C, overnight). 2, Sodium citrate pH 6.0 was used for antibody retrieval(>98°C, 20min). 3, Secondary antibody was diluted at 1:200(room temperature, 30min). Negative control was used by secondary antibody only.



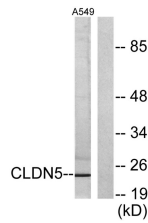
Immunofluorescence analysis of human-liver tissue. 1, Claudin-5 Polyclonal Antibody (red) was diluted at 1:200(4°C, overnight). 2, Cy3 labeled Secondary antibody was diluted at 1:300(room temperature, 50min). 3, Picture B: DAPI (blue) 10min. Picture A: Target. Picture B: DAPI. Picture C: merge of A+B



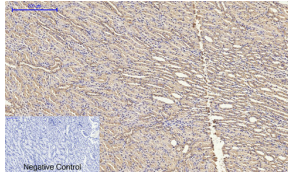
Immunohistochemical analysis of paraffin-embedded Human-Appendix tissue. 1, Claudin-5 Polyclonal Antibody was diluted at 1:200(4°C, overnight). 2, Sodium citrate pH 6.0 was used for antibody retrieval(>98°C, 20min). 3, Secondary antibody was diluted at 1:200(room temperature, 30min). Negative control was used by secondary antibody only.



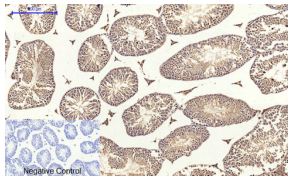
Immunohistochemical analysis of paraffin-embedded Rat-heart tissue. 1, Claudin-5 Polyclonal Antibody was diluted at 1:200 (4°C, overnight). 2, Sodium citrate pH 6.0 was used for antibody retrieval (>98°C, 20min). 3, Secondary antibody was diluted at 1:200 (room temperature, 30min). Negative control was used by secondary antibody only.



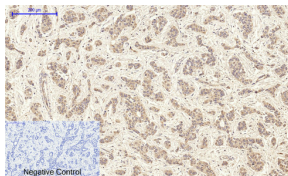
Western blot analysis of lysates from A549 cells, using Claudin 5 Antibody. The lane on the right is blocked with the synthesized peptide.



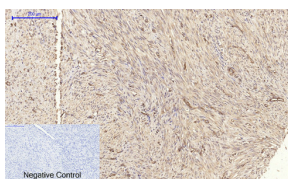
Immunohistochemical analysis of paraffin-embedded Rat-kidney tissue. 1, Claudin-5 Polyclonal Antibody was diluted at 1:200 (4°C, overnight). 2, Sodium citrate pH 6.0 was used for antibody retrieval (>98°C, 20min). 3, Secondary antibody was diluted at 1:200 (room temperature, 30min). Negative control was used by secondary antibody only.



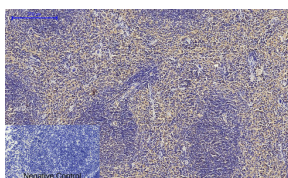
Immunohistochemical analysis of paraffin-embedded Mouse-testis tissue. 1, Claudin-5 Polyclonal Antibody was diluted at 1:200 (4°C, overnight). 2, Sodium citrate pH 6.0 was used for antibody retrieval (>98°C, 20min). 3, Secondary antibody was diluted at 1:200 (room temperature, 30min). Negative control was used by secondary antibody only.



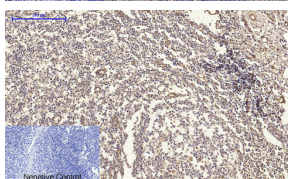
Immunohistochemical analysis of paraffin-embedded Human-liver-cancer tissue. 1, Claudin-5 Polyclonal Antibody was diluted at 1:200 (4°C, overnight). 2, Sodium citrate pH 6.0 was used for antibody retrieval (>98°C, 20min). 3, Secondary antibody was diluted at 1:200 (room temperature, 30min). Negative control was used by secondary antibody only.



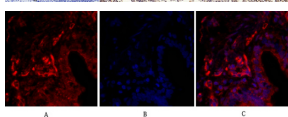
Immunohistochemical analysis of paraffin-embedded Human-uterus-cancer tissue. 1, Claudin-5 Polyclonal Antibody was diluted at 1:200 (4°C, overnight). 2, Sodium citrate pH 6.0 was used for antibody retrieval (>98°C, 20min). 3, Secondary antibody was diluted at 1:200 (room temperature, 30min). Negative control was used by secondary antibody only.



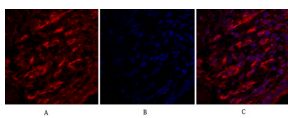
Immunohistochemical analysis of paraffin-embedded Mouse-spleen tissue. 1, Claudin-5 Polyclonal Antibody was diluted at 1:200 (4°C, overnight). 2, Sodium citrate pH 6.0 was used for antibody retrieval (>98°C, 20min). 3, Secondary antibody was diluted at 1:200 (room temperature, 30min). Negative control was used by secondary antibody only.



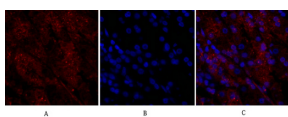
Immunohistochemical analysis of paraffin-embedded Human-Tonsil tissue. 1, Claudin-5 Polyclonal Antibody was diluted at 1:200 (4°C, overnight). 2, Sodium citrate pH 6.0 was used for antibody retrieval (>98°C, 20min). 3, Secondary antibody was diluted at 1:200 (room temperature, 30min). Negative control was used by secondary antibody only.



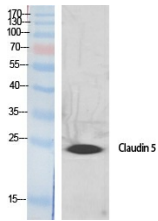
Immunofluorescence analysis of human-lung tissue. 1, Claudin-5 Polyclonal Antibody (red) was diluted at 1:200 (4°C, overnight). 2, Cy3 labeled Secondary antibody was diluted at 1:300 (room temperature, 50min). 3, Picture B: DAPI (blue) 10min. Picture A: Target. Picture B: DAPI. Picture C: merge of A+B



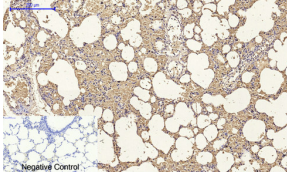
Immunofluorescence analysis of human-lung tissue. 1, Claudin-5 Polyclonal Antibody (red) was diluted at 1:200 (4°C, overnight). 2, Cy3 labeled Secondary antibody was diluted at 1:300 (room temperature, 50min). 3, Picture B: DAPI (blue) 10min. Picture A: Target. Picture B: DAPI. Picture C: merge of A+B



Immunofluorescence analysis of human-stomach tissue. 1, Claudin-5 Polyclonal Antibody (red) was diluted at 1:200 (4°C, overnight). 2, Cy3 labeled Secondary antibody was diluted at 1:300 (room temperature, 50min). 3, Picture B: DAPI (blue) 10min. Picture A: Target. Picture B: DAPI. Picture C: merge of A+B



Western Blot analysis of various cells using Claudin-5 Polyclonal Antibody diluted at 1:500



Immunohistochemical analysis of paraffin-embedded Rat-lung tissue. 1, Claudin-5 Polyclonal Antibody was diluted at 1:200 (4°C, overnight). 2, Sodium citrate pH 6.0 was used for antibody retrieval (>98°C, 20min). 3, Secondary antibody was diluted at 1:200 (room temperature, 30min). Negative control was used by secondary antibody only.



Western Blot analysis of A549 cells using Claudin-5 Polyclonal Antibody diluted at 1:500

Storage

-20°C for one year

501 Changsheng S Rd, Nanhu Dist, Jiaxing, Zhejiang, China

Tel: 86 21 31007137 | E-mail: save@bt-laboratory.com | www.bt-laboratory.com