

CLC-4 Polyclonal Antibody

Description

Product type	Primary Antibody
Code	BT-AP01860
Host	Rabbit
Isotype	IgG
Size	20ul, 50ul, 100ul
Immunogen	The antiserum was produced against synthesized peptide derived from human CLCN4. AA range:221-270
Mol wt	84917
Species reactivity	Human, Mouse, Rat
Clonality	Polyclonal
Recommended application	WB, IF, ELISA
Concentration	1 mg/ml
Full name	CLC-4 Antibody
Synonyms	CLCN4; H(+)/Cl(-) exchange transporter 4; Chloride channel protein 4; ClC-4; Chloride transporter ClC-4

This product is for research use only, not for use in human, therapeutic or diagnostic procedure.

Background

The CLCN family of voltage-dependent chloride channel genes comprises nine members (CLCN1-7, Ka and Kb) which demonstrate quite diverse functional characteristics while sharing significant sequence homology. Chloride channel 4 has an evolutionary conserved CpG island and is conserved in both mouse and hamster. CLCN4 is mapped in close proximity to APXL (Apical protein Xenopus laevis-like) and OA1 (Ocular albinism type I), which are both located on the human X chromosome at band p22.3. The physiological role of chloride channel 4 remains unknown but may contribute to the pathogenesis of neuronal disorders. Alternate splicing results in two transcript variants that encode different proteins.

Recommended Dilution

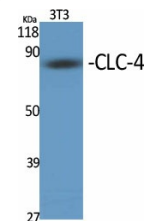
WB: 1: 500 - 1: 2000

IF: 1: 200 - 1: 1000

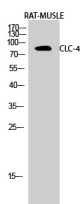
ELISA: 1: 40000

Not yet tested in other applications.

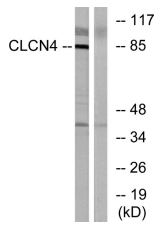
Images



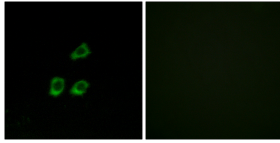
Western Blot analysis of various cells using CLC-4 Polyclonal Antibody diluted at 1:500



Western Blot analysis of RAT-MUSCLE cells using CLC-4 Polyclonal Antibody diluted at 1:500



Western blot analysis of lysates from MCF-7 cells, using CLCN4 Antibody. The lane on the right is blocked with the synthesized peptide.



Immunofluorescence analysis of HUVEC cells, using CLCN4 Antibody. The picture on the right is blocked with the synthesized peptide.

Storage

-20°C for one year

501 Changsheng S Rd, Nanhu Dist, Jiaxing, Zhejiang, China

Tel: 86 21 31007137 | E-mail: save@bt-laboratory.com | www.bt-laboratory.com