

CLC-6 Polyclonal Antibody

Description

Product type	Primary Antibody
Code	BT-AP01863
Host	Rabbit
Isotype	IgG
Size	20ul, 50ul, 100ul
Immunogen	The antiserum was produced against synthesized peptide derived from human CLCN6. AA range:611-660
Mol wt	97217
Species reactivity	Human, Mouse, Rat, Monkey
Clonality	Polyclonal
Recommended application	WB, ELISA
Concentration	1 mg/ml
Full name	CLC-6 Antibody
Synonyms	CLCN6; KIAA0046; Chloride transport protein 6; Chloride channel protein 6; CIC-6

This product is for research use only, not for use in human, therapeutic or diagnostic procedure.

Background

CLCN6 encodes a member of the voltage-dependent chloride channel protein family. Members of this family can function as either chloride channels or antiporters. Chloride voltage-gated channel 6 is primarily localized to late endosomes and functions as a chloride/proton antiporter. Alternate splicing results in both coding and non-coding variants. Additional alternately spliced variants have been described but their full-length structure is unknown.

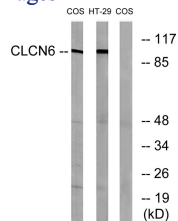
Recommended Dilution

WB: 1: 500 - 1: 2000

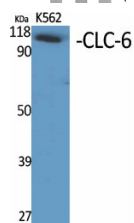
ELISA: 1: 40000

Not yet tested in other applications.

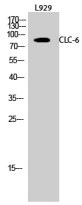
Images



Western blot analysis of lysates from COS7 and HT-29 cells, using CLCN6 Antibody. The lane on the right is blocked with the synthesized peptide.



Western Blot analysis of various cells using CLC-6 Polyclonal Antibody diluted at 1:500



Western Blot analysis of L929 cells using CLC-6 Polyclonal Antibody diluted at 1:500

Storage

-20°C for one year

501 Changsheng S Rd, Nanhu Dist, Jiaxing, Zhejiang, China

Tel: 86 21 31007137 | E-mail: save@bt-laboratory.com | www.bt-laboratory.com