

## CLC-KA Polyclonal Antibody

### Description

<b>Product type</b>	Primary Antibody
<b>Code</b>	BT-AP01867
<b>Host</b>	Rabbit
<b>Isotype</b>	IgG
<b>Size</b>	20ul, 50ul, 100ul
<b>Immunogen</b>	The antiserum was produced against synthesized peptide derived from human CLCNKA. AA range:581-630
<b>Mol wt</b>	75285
<b>Species reactivity</b>	Human
<b>Clonality</b>	Polyclonal
<b>Recommended application</b>	WB, ELISA
<b>Concentration</b>	1 mg/ml
<b>Full name</b>	CLC-KA Antibody
<b>Synonyms</b>	CLCNKA; Chloride channel protein CIC-Ka; Chloride channel Ka; CIC-K1

**This product is for research use only, not for use in human, therapeutic or diagnostic procedure.**

### Background

CLCNKA is a member of the CLC family of voltage-gated chloride channels. The encoded protein (chloride voltage-gated channel Ka) is predicted to have 12 transmembrane domains, and requires a beta subunit called barttin to form a functional channel. It is thought to function in salt reabsorption in the kidney and potassium recycling in the inner ear. The gene is highly similar to CLCNKB, which is located 10 kb downstream from this gene. Multiple transcript variants encoding different isoforms have been found for CLCNKA.

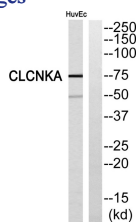
### Recommended Dilution

WB: 1: 500 - 1: 2000

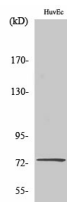
ELISA: 1: 40000

Not yet tested in other applications.

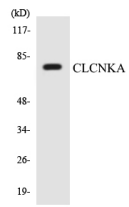
### Images



Western blot analysis of CLCNKA Antibody. The lane on the right is blocked with the CLCNKA peptide.



Western Blot analysis of various cells using CLC-KA Polyclonal Antibody



Western blot analysis of the lysates from HepG2 cells using CLCNKA antibody.

### Storage

-20°C for one year

501 Changsheng S Rd, Nanhu Dist, Jiaxing, Zhejiang, China

Tel: 86 21 31007137 | E-mail: [save@bt-laboratory.com](mailto:save@bt-laboratory.com) | [www.bt-laboratory.com](http://www.bt-laboratory.com)