

Cleaved-C1r LC (I464) Polyclonal Antibody

Description

Product type	Primary Antibody
Code	BT-AP01881
Host	Rabbit
Isotype	IgG
Size	20ul, 50ul, 100ul
Immunogen	The antiserum was produced against synthesized peptide derived from human C1R. AA range:445-494
Mol wt	80174
Species reactivity	Human
Clonality	Polyclonal
Recommended application	WB, ELISA
Concentration	1 mg/ml
Full name	Cleaved-C1r LC (I464) Antibody
Synonyms	C1R; Complement C1r subcomponent; Complement component 1 subcomponent r

This product is for research use only, not for use in human, therapeutic or diagnostic procedure.

Background

C1R (Complement C1r Subcomponent) is a Protein Coding gene. Diseases associated with C1R include immunodeficiency due to an early component of complement deficiency and c1r/c1s deficiency, combined. Among its related pathways are Complement and coagulation cascades and Immune System. GO annotations related to C1R include calcium ion binding and serine-type peptidase activity. An important paralog of C1R is HP.C1r B chain is a serine protease that combines with C1q and C1s to form C1, the first component of the classical pathway of the complement system. C1R aligns across a gap in the GRCh38 reference genome assembly, and therefore, the 5' end of C1R was annotated on NT_009714.18 and the 3' end was annotated on NT_009759.17 in NCBI's Homo sapiens Annotation Release 106.

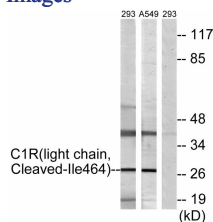
Recommended Dilution

WB: 1: 500 - 1: 2000

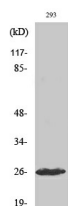
ELISA: 1: 20000

Not yet tested in other applications.

Images



Western blot analysis of lysates from 293 and A549 cells, treated with etoposide 25uM 1h, using C1R (light chain, Cleaved-Ile464) Antibody. The lane on the right is blocked with the synthesized peptide.



Western Blot analysis of various cells using Cleaved-C1r LC (I464) Polyclonal Antibody

Storage

-20°C for one year

501 Changsheng S Rd, Nanhu Dist, Jiaxing, Zhejiang, China

Tel: 86 21 31007137 | E-mail: save@bt-laboratory.com | www.bt-laboratory.com