

Cleaved-C1s HC (R437) Polyclonal Antibody

Description

Product type	Primary Antibody
Code	BT-AP01882
Host	Rabbit
Isotype	IgG
Size	20ul, 50ul, 100ul
Immunogen	The antiserum was produced against synthesized peptide derived from human C1S. AA range:388-437
Mol wt	76684
Species reactivity	Human
Clonality	Polyclonal
Recommended application	WB, ELISA
Concentration	1 mg/ml
Full name	Cleaved-C1s HC (R437) Antibody
Synonyms	C1S; Complement C1s subcomponent; C1 esterase; Complement component 1 subcomponent s

This product is for research use only, not for use in human, therapeutic or diagnostic procedure.

Background

C1S encodes a serine protease, which is a major constituent of the human complement subcomponent C1. C1s associates with two other complement components C1r and C1q in order to yield the first component of the serum complement system. Defects in C1S are the cause of selective C1s deficiency.

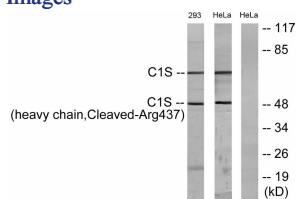
Recommended Dilution

WB: 1: 500 - 1: 2000

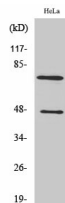
ELISA: 1: 20000

Not yet tested in other applications.

Images



Western blot analysis of lysates from 293 and HeLa cells, treated with etoposide 25uM 1h, using C1S (heavy chain, Cleaved-Arg437) Antibody. The lane on the right is blocked with the synthesized peptide.



Western Blot analysis of various cells using Cleaved-C1s HC (R437) Polyclonal Antibody

Storage

-20°C for one year