

Cleaved-Caspase-1 p20 (N120) Polyclonal Antibody

Description

Product type	Primary Antibody
Code	BT-AP01885
Host	Rabbit
Isotype	IgG
Size	20ul, 50ul, 100ul
Immunogen	The antiserum was produced against synthesized peptide derived from human Caspase 1. AA range:101-150
Mol wt	45159
Species reactivity	Human
Clonality	Polyclonal
Recommended application	WB, ELISA
Concentration	1 mg/ml
Full name	Cleaved-Caspase-1 p20 (N120) Antibody
Synonyms	CASP1; IL1BC; IL1BCE; Caspase-1; CASP-1; Interleukin-1 beta convertase; IL-1BC; Interleukin-1 beta-converting enzyme; ICE; IL-1 beta-converting enzyme; p45

This product is for research use only, not for use in human, therapeutic or diagnostic procedure.

Background

CASP1 (caspase 1) encodes a protein which is a member of the cysteine-aspartic acid protease (caspase) family. Sequential activation of caspases plays a central role in the execution-phase of cell apoptosis. Caspases exist as inactive proenzymes which undergo proteolytic processing at conserved aspartic residues to produce 2 subunits, large and small, that dimerize to form the active enzyme. CASP1 was identified by its ability to proteolytically cleave and activate the inactive precursor of interleukin-1, a cytokine involved in the processes such as inflammation, septic shock, and wound healing. CASP1 has been shown to induce cell apoptosis and may function in various developmental stages. Studies of a similar gene in mouse suggest a role in the pathogenesis of Huntington disease. Alternative splicing results in transcript variants encoding distinct isoforms.

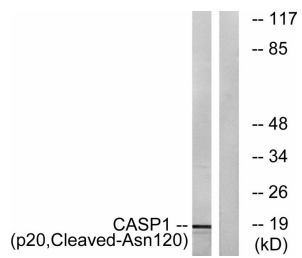
Recommended Dilution

WB: 1: 500 - 1: 2000

ELISA: 1: 20000

Not yet tested in other applications.

Images



Western blot analysis of lysates from rat eye cells, using Caspase 1 (p20, Cleaved-Asn120) Antibody.
The lane on the right is blocked with the synthesized peptide.

Storage

-20°C for one year

501 Changsheng S Rd, Nanhu Dist, Jiaxing, Zhejiang, China

Tel: 86 21 31007137 | E-mail: save@bt-laboratory.com | www.bt-laboratory.com