

Cleaved-Caspase-2 p18 (G170) Polyclonal Antibody

Description

Product type	Primary Antibody
Code	BT-AP01886
Host	Rabbit
Isotype	IgG
Size	20ul, 50ul, 100ul
Immunogen	The antiserum was produced against synthesized peptide derived from human Caspase 2. AA range:151-200
Mol wt	50685
Species reactivity	Human, Mouse, Rat
Clonality	Polyclonal
Recommended application	WB, ELISA
Concentration	1 mg/ml
Full name	Cleaved-Caspase-2 p18 (G170) Antibody
Synonyms	CASP2; ICH1; NEDD2; Caspase-2; CASP-2; Neural precursor cell expressed developmentally down-regulated protein 2; NEDD-2; Protease ICH-1

This product is for research use only, not for use in human, therapeutic or diagnostic procedure.

Background

CASP2 encodes a member of the cysteine-aspartic acid protease (caspase) family. Caspases mediate cellular apoptosis through the proteolytic cleavage of specific protein substrates. Caspase 2 may function in stress-induced cell death pathways, cell cycle maintenance, and the suppression of tumorigenesis. Increased expression of CASP2 may play a role in neurodegenerative disorders including Alzheimer's disease, Huntington's disease and temporal lobe epilepsy. Alternatively spliced transcript variants encoding multiple isoforms have been observed for this gene.

Recommended Dilution

WB: 1: 500 - 1: 2000

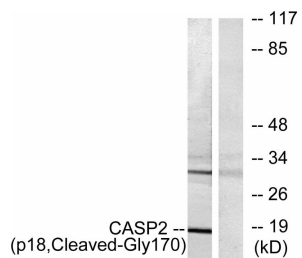
ELISA: 1: 40000

Not yet tested in other applications.

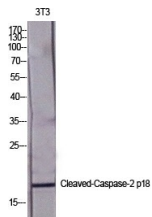
Images



Western Blot analysis of Jurkat cells using Cleaved-Caspase-2 p18 (G170) Polyclonal Antibody diluted at 1:2000



Western blot analysis of lysates from Jurkat cells, treated with etoposide 25uM 24h, using Caspase 2 (p18, Cleaved-Gly170) Antibody. The lane on the right is blocked with the synthesized peptide.



Western Blot analysis of various cells using Cleaved-Caspase-2 p18 (G170) Polyclonal Antibody diluted at 1:2000

Storage

-20°C for one year

501 Changsheng S Rd, Nanhu Dist, Jiaxing, Zhejiang, China

Tel: 86 21 31007137 | E-mail: save@bt-laboratory.com | www.bt-laboratory.com