

Cleaved-Caspase-3 p17 (D175) Polyclonal Antibody

Description

| | |
|-------------------------|---|
| Product type | Primary Antibody |
| Code | BT-AP01890 |
| Host | Rabbit |
| Isotype | IgG |
| Size | 20ul, 50ul, 100ul |
| Immunogen | The antiserum was produced against synthesized peptide derived from human CASP3. AA range:126-175 |
| Mol wt | 31608 |
| Species reactivity | Human |
| Clonality | Polyclonal |
| Recommended application | IHC-p, ELISA |
| Concentration | 1 mg/ml |
| Full name | Cleaved-Caspase-3 p17 (D175) Antibody |
| Synonyms | CASP3; CPP32; Caspase-3; CASP-3; Apopain; Cysteine protease CPP32; CPP-32; Protein Yama; SREBP cleavage activity 1; SCA-1 |

This product is for research use only, not for use in human, therapeutic or diagnostic procedure.

Background

CASP3 encodes caspase 3 which is a member of the cysteine-aspartic acid protease (caspase) family. Sequential activation of caspases plays a central role in the execution-phase of cell apoptosis. Caspases exist as inactive proenzymes which undergo proteolytic processing at conserved aspartic residues to produce two subunits, large and small, that dimerize to form the active enzyme. Caspase 3 cleaves and activates caspases 6, 7 and 9, and caspase 3 itself is processed by caspases 8, 9 and 10. It is the predominant caspase involved in the cleavage of amyloid-beta 4A precursor protein, which is associated with neuronal death in Alzheimer's disease. Alternative splicing of CASP3 results in two transcript variants that encode the same protein.

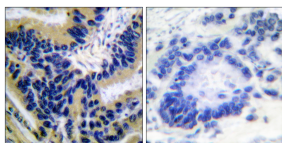
Recommended Dilution

IHC: 1: 100 - 1: 300

ELISA: 1: 20000

Not yet tested in other applications.

Images



Immunohistochemistry analysis of paraffin-embedded human lung carcinoma, using Caspase 3 (Cleaved-Asp175) Antibody. The picture on the right is blocked with the synthesized peptide.

Storage

-20°C for one year