

Cleaved-Caspase-4/5 p20 (D270/D311) Polyclonal Antibody

Description

Product type	Primary Antibody
Code	BT-AP01893
Host	Rabbit
Isotype	IgG
Size	20ul, 50ul, 100ul
Immunogen	The antiserum was produced against synthesized peptide derived from human Caspase 4/5. AA range:221-270
Mol wt	43262/47814
Species reactivity	Human
Clonality	Polyclonal
Recommended application	WB, ELISA
Concentration	1 mg/ml
Full name	Cleaved-Caspase-4/5 p20 (D270/D311) Antibody
Synonyms	CASP4; ICH2; Caspase-4; CASP-4; ICE(rel)-II; Protease ICH-2; Protease TX; CASP5; ICH3; Caspase-5; CASP-5; ICE(rel)-III; Protease ICH-3; Protease TY

This product is for research use only, not for use in human, therapeutic or diagnostic procedure.

Background

CASP4 (caspase 4) encodes a protein that is a member of the cysteine-aspartic acid protease (caspase) family. Sequential activation of caspases plays a central role in the execution-phase of cell apoptosis. Caspases exist as inactive proenzymes composed of a prodomain and a large and small protease subunit. Activation of caspases requires proteolytic processing at conserved internal aspartic residues to generate a heterodimeric enzyme consisting of the large and small subunits. This caspase is able to cleave and activate its own precursor protein, as well as caspase 1 precursor. When overexpressed, caspase 4 induces cell apoptosis. Alternative splicing results in transcript variants encoding distinct isoforms.

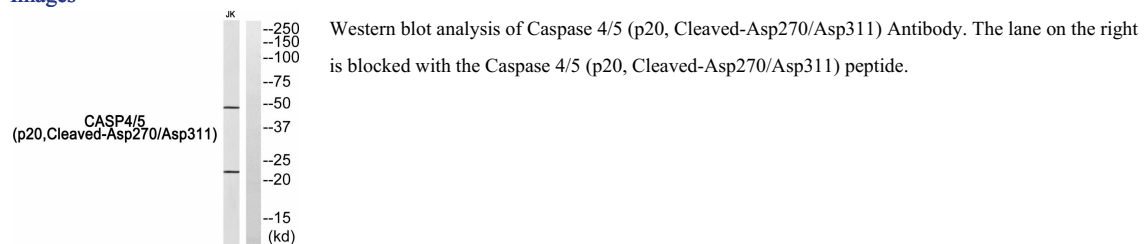
Recommended Dilution

WB: 1: 500 - 1: 2000

ELISA: 1: 40000

Not yet tested in other applications.

Images



Storage

-20°C for one year

