

## Cleaved-Caspase-5 p20 (D121) Polyclonal Antibody

### Description

<b>Product type</b>	Primary Antibody
<b>Code</b>	BT-AP01895
<b>Host</b>	Rabbit
<b>Isotype</b>	IgG
<b>Size</b>	20ul, 50ul, 100ul
<b>Immunogen</b>	The antiserum was produced against synthesized peptide derived from human Caspase 5. AA range:102-151
<b>Mol wt</b>	47814
<b>Species reactivity</b>	Human
<b>Clonality</b>	Polyclonal
<b>Recommended application</b>	WB, ELISA
<b>Concentration</b>	1 mg/ml
<b>Full name</b>	Cleaved-Caspase-5 p20 (D121) Antibody
<b>Synonyms</b>	CASP5; ICH3; Caspase-5; CASP-5; ICE(rel)-III; Protease ICH-3; Protease TY

**This product is for research use only, not for use in human, therapeutic or diagnostic procedure.**

### Background

CASP5 encodes a member of the cysteine-aspartic acid protease (caspase) family. Sequential activation of caspases plays a central role in the execution-phase of cell apoptosis. Caspases exist as inactive proenzymes which undergo proteolytic processing at conserved aspartic residues to produce two subunits, large and small, that dimerize to form the active enzyme. Overexpression of the active form of caspase 5 induces apoptosis in fibroblasts. Max, a central component of the Myc/Max/Mad transcription regulation network important for cell growth, differentiation, and apoptosis, is cleaved by caspase 5; this process requires Fas-mediated dephosphorylation of Max. The expression of CASP5 is regulated by interferon-gamma and lipopolysaccharide. Alternatively spliced transcript variants have been identified for CASP5.

### Recommended Dilution

WB: 1: 500 - 1: 2000

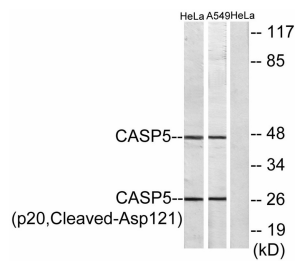
ELISA: 1: 20000

Not yet tested in other applications.

### Images



Western Blot analysis of various cells using Cleaved-Caspase-5 p20 (D121) Polyclonal Antibody diluted at 1:1000



Western blot analysis of lysates from HeLa and A549 cells, treated with etoposide 25uM 24h, using Caspase 5 (p20,Cleaved-Asp121) Antibody. The lane on the right is blocked with the synthesized peptide.

### Storage

-20°C for one year

501 Changsheng S Rd, Nanhui Dist, Jiading, Zhejiang, China

Tel: 86 21 31007137 | E-mail: [save@bt-laboratory.com](mailto:save@bt-laboratory.com) | [www.bt-laboratory.com](http://www.bt-laboratory.com)