

Cleaved-Caspase-6 p18 (D162) Polyclonal Antibody

Description

Product type	Primary Antibody
Code	BT-AP01897
Host	Rabbit
Isotype	IgG
Size	20ul, 50ul, 100ul
Immunogen	The antiserum was produced against synthesized peptide derived from mouse Caspase 6. AA range:144-193
Mol wt	31595
Species reactivity	Mouse, Rat
Clonality	Polyclonal
Recommended application	WB, IHC-p, ELISA
Concentration	1 mg/ml
Full name	Cleaved-Caspase-6 p18 (D162) Antibody
Synonyms	CASP6; MCH2; Caspase-6; CASP-6; Apoptotic protease Mch-2

This product is for research use only, not for use in human, therapeutic or diagnostic procedure.

Background

CASP6 encodes a member of the cysteine-aspartic acid protease (caspase) family of enzymes. Sequential activation of caspases plays a central role in the execution-phase of cell apoptosis. Caspases exist as inactive proenzymes which undergo proteolytic processing at conserved aspartic acid residues to produce two subunits, large and small, that dimerize to form the active enzyme. Caspase 6 is processed by caspases 7, 8 and 10, and is thought to function as a downstream enzyme in the caspase activation cascade. Alternative splicing of CASP6 results in multiple transcript variants that encode different isoforms.

Recommended Dilution

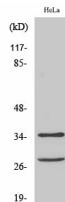
WB: 1: 500 - 1: 2000

IHC: 1: 100 - 1: 300

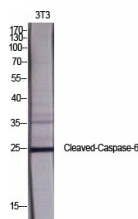
ELISA: 1: 10000

Not yet tested in other applications.

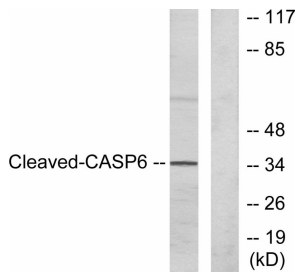
Images



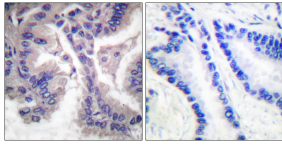
Western Blot analysis of HeLa cells using Cleaved-Caspase-6 p18 (D162) Polyclonal Antibody diluted at 1:1000



Western Blot analysis of various cells using Cleaved-Caspase-6 p18 (D162) Polyclonal Antibody diluted at 1:1000



Western blot analysis of lysates from HeLa cells, treated with Etoposide 25uM 60', using Caspase 6 (Cleaved-Asp162) Antibody. The lane on the right is blocked with the synthesized peptide.



Immunohistochemistry analysis of paraffin-embedded human lung carcinoma tissue, using Caspase 6 (Cleaved-Asp162) Antibody. The picture on the right is blocked with the synthesized peptide.

Storage

-20°C for one year

501 Changsheng S Rd, Nanhu Dist, Jiaxing, Zhejiang, China

Tel: 86 21 31007137 | E-mail: save@bt-laboratory.com | www.bt-laboratory.com