

## Cleaved-Caspase-6 p18 (D179) Polyclonal Antibody

### Description

<b>Product type</b>	Primary Antibody
<b>Code</b>	BT-AP01898
<b>Host</b>	Rabbit
<b>Isotype</b>	IgG
<b>Size</b>	20ul, 50ul, 100ul
<b>Immunogen</b>	The antiserum was produced against synthesized peptide derived from human Caspase 6. AA range:130-179
<b>Mol wt</b>	33310
<b>Species reactivity</b>	Human, Rat
<b>Clonality</b>	Polyclonal
<b>Recommended application</b>	WB, IHC-p, ELISA
<b>Concentration</b>	1 mg/ml
<b>Full name</b>	Cleaved-Caspase-6 p18 (D179) Antibody
<b>Synonyms</b>	CASP6; MCH2; Caspase-6; CASP-6; Apoptotic protease Mch-2

**This product is for research use only, not for use in human, therapeutic or diagnostic procedure.**

### Background

CASP6 encodes a member of the cysteine-aspartic acid protease (caspase) family of enzymes. Sequential activation of caspases plays a central role in the execution-phase of cell apoptosis. Caspases exist as inactive proenzymes which undergo proteolytic processing at conserved aspartic acid residues to produce two subunits, large and small, that dimerize to form the active enzyme. Caspase 6 is processed by caspases 7, 8 and 10, and is thought to function as a downstream enzyme in the caspase activation cascade. Alternative splicing of CASP6 results in multiple transcript variants that encode different isoforms.

### Recommended Dilution

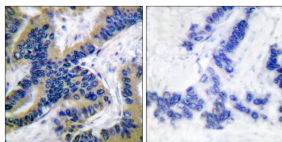
WB: 1: 500 - 1: 2000

IHC: 1: 100 - 1: 300

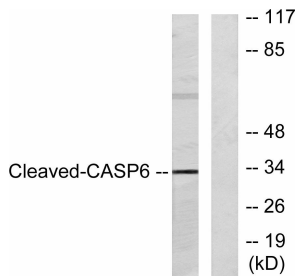
ELISA: 1: 40000

Not yet tested in other applications.

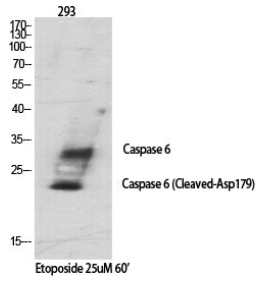
### Images



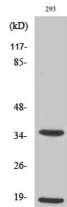
Immunohistochemistry analysis of paraffin-embedded human lung carcinoma tissue, using Caspase 6 (Cleaved-Asp162) Antibody. The picture on the right is blocked with the synthesized peptide.



Western blot analysis of lysates from 293 cells, treated with Etoposide 25uM 60', using Caspase 6 (Cleaved-Asp162) Antibody. The lane on the right is blocked with the synthesized peptide.



Western Blot analysis of various cells using Cleaved-Caspase-6 p18 (D179) Polyclonal Antibody diluted at 1:1000



Western Blot analysis of 293 cells using Cleaved-Caspase-6 p18 (D179) Polyclonal Antibody diluted at 1:1000

### Storage

-20°C for one year

501 Changsheng S Rd, Nanhu Dist, Jiaxing, Zhejiang, China

Tel: 86 21 31007137 | E-mail: [save@bt-laboratory.com](mailto:save@bt-laboratory.com) | [www.bt-laboratory.com](http://www.bt-laboratory.com)