

Cleaved-Caspase-8 p18 (S217) Polyclonal Antibody

Description

Product type	Primary Antibody
Code	BT-AP01903
Host	Rabbit
Isotype	IgG
Size	20ul, 50ul, 100ul
Immunogen	Synthesized peptide derived from Cleaved-Caspase-8 p18 (S217) . at AA range: 170-250
Mol wt	55391
Species reactivity	Human
Clonality	Polyclonal
Recommended application	WB, ELISA
Concentration	1 mg/ml
Full name	Cleaved-Caspase-8 p18 (S217) Antibody
Synonyms	CASP8; MCH5; Caspase-8; CASP-8; Apoptotic cysteine protease; Apoptotic protease Mch-5; CAP4; FADD-homologous ICE/ced-3-like protease; FADD-like ICE; FLICE; ICE-like apoptotic protease 5; MORT1-associa

This product is for research use only, not for use in human, therapeutic or diagnostic procedure.

Background

CASP8 (caspase 8) encodes a member of the cysteine-aspartic acid protease (caspase) family. Sequential activation of caspases plays a central role in the execution-phase of cell apoptosis. Caspases exist as inactive proenzymes composed of a prodomain, a large protease subunit, and a small protease subunit. Activation of caspases requires proteolytic processing at conserved internal aspartic residues to generate a heterodimeric enzyme consisting of the large and small subunits. This protein is involved in the programmed cell death induced by Fas and various apoptotic stimuli. The N-terminal FADD-like death effector domain of this protein suggests that it may interact with Fas-interacting protein FADD. This protein was detected in the insoluble fraction of the affected brain region from Huntington disease patients but not in those from normal controls, which implicated the role in neurodegenerative diseases. Many alternatively spliced transcript variants encoding different isoforms have been described, although not all variants have had their full-length sequences determined.

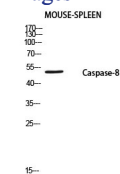
Recommended Dilution

WB: 1: 500 - 1: 2000

ELISA: 1: 10000

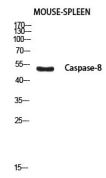
Not yet tested in other applications.

Images



Western blot analysis of MOUSE-SPLEEN using Caspase-8 P18 antibody. Antibody was diluted at 1:1000.

Secondary antibody was diluted at 1:20000



Western blot analysis of MOUSE-SPLEEN using Cleaved-Caspase-8 p18 (S217) antibody. Antibody was diluted at 1:1000. Secondary antibody was diluted at 1:20000

Storage

-20°C for one year

501 Changsheng S Rd, Nanhu Dist, Jiaxing, Zhejiang, China

Tel: 86 21 31007137 | E-mail: save@bt-laboratory.com | www.bt-laboratory.com