

Cleaved-Cathepsin G (I21) Polyclonal Antibody

Description

Product type	Primary Antibody
Code	BT-AP01911
Host	Rabbit
Isotype	IgG
Size	20ul, 50ul, 100ul
Immunogen	The antiserum was produced against synthesized peptide derived from human CATG. AA range:2-51
Mol wt	28837
Species reactivity	Human, Mouse, Rat
Clonality	Polyclonal
Recommended application	WB, ELISA
Concentration	1 mg/ml
Full name	Cleaved-Cathepsin G (I21) Antibody
Synonyms	CTSG; Cathepsin G; CG

This product is for research use only, not for use in human, therapeutic or diagnostic procedure.

Background

The protein encoded by CTSG, a member of the peptidase S1 protein family, is found in azurophilic granules of neutrophilic polymorphonuclear leukocytes. The encoded protease (cathepsin G) has a specificity similar to that of chymotrypsin C, and may participate in the killing and digestion of engulfed pathogens, and in connective tissue remodeling at sites of inflammation. In addition, cathepsin G is antimicrobial, with bacteriocidal activity against *S. aureus* and *N. gonorrhoeae*. Transcript variants utilizing alternative polyadenylation signals exist for this CTSG.

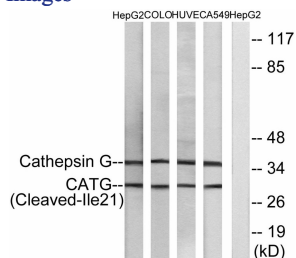
Recommended Dilution

WB: 1: 500 - 1: 2000

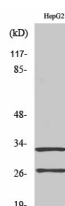
ELISA: 1: 20000

Not yet tested in other applications.

Images



Western blot analysis of lysates from HepG2, COLO, HUVEC, and A549 cells, using CATG (Cleaved-Ile21) Antibody. The lane on the right is blocked with the synthesized peptide.



Western Blot analysis of various cells using Cleaved-Cathepsin G (I21) Polyclonal Antibody

Storage

-20°C for one year

501 Changsheng S Rd, Nanhu Dist, Jiaxing, Zhejiang, China

Tel: 86 21 31007137 | E-mail: save@bt-laboratory.com | www.bt-laboratory.com