

Cleaved-Cathepsin L1 HC (T288) Polyclonal Antibody

Description

Product type	Primary Antibody
Code	BT-AP01912
Host	Rabbit
Isotype	IgG
Size	20ul, 50ul, 100ul
Immunogen	The antiserum was produced against synthesized peptide derived from human CATL1. AA range:239-288
Mol wt	37564
Species reactivity	Human
Clonality	Polyclonal
Recommended application	WB, ELISA
Concentration	1 mg/ml
Full name	Cleaved-Cathepsin L1 HC (T288) Antibody
Synonyms	CTSL1; CTSL; Cathepsin L1; Major excreted protein; MEP

This product is for research use only, not for use in human, therapeutic or diagnostic procedure.

Background

The protein encoded by CTSL is a lysosomal cysteine proteinase that plays a major role in intracellular protein catabolism. Its substrates include collagen and elastin, as well as alpha-1 protease inhibitor, a major controlling element of neutrophil elastase activity. The encoded protein (cathepsin L) has been implicated in several pathologic processes, including myofibril necrosis in myopathies and in myocardial ischemia, and in the renal tubular response to proteinuria. cathepsin L, which is a member of the peptidase C1 family, is a dimer composed of disulfide-linked heavy and light chains, both produced from a single protein precursor. Multiple alternatively spliced transcript variants have been found for CTSL.

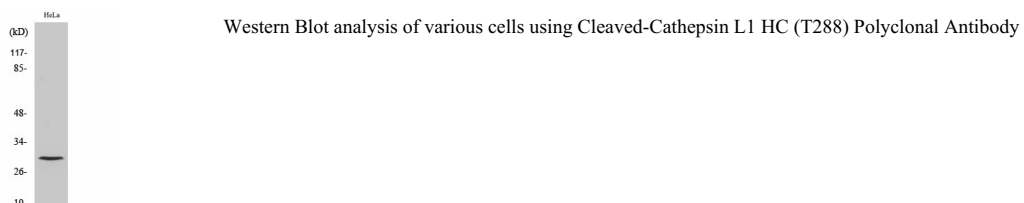
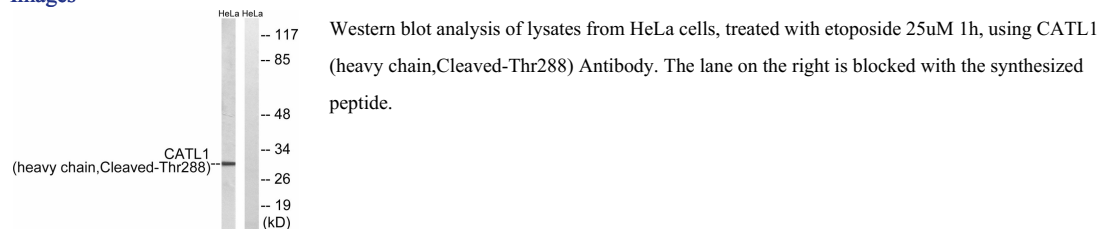
Recommended Dilution

WB: 1: 500 - 1: 2000

ELISA: 1: 10000

Not yet tested in other applications.

Images



Storage

-20°C for one year

501 Changsheng S Rd, Nanhu Dist, Jiaxing, Zhejiang, China

Tel: 86 21 31007137 | E-mail: save@bt-laboratory.com | www.bt-laboratory.com