

Cleaved-CD97 Alpha (L530) Polyclonal Antibody

Description

| | |
|--------------------------------|---|
| Product type | Primary Antibody |
| Code | BT-AP01915 |
| Host | Rabbit |
| Isotype | IgG |
| Size | 20ul, 50ul, 100ul |
| Immunogen | The antiserum was produced against synthesized peptide derived from human CD97alpha. AA range:481-530 |
| Mol wt | 91869 |
| Species reactivity | Human |
| Clonality | Polyclonal |
| Recommended application | WB, ELISA |
| Concentration | 1 mg/ml |
| Full name | Cleaved-CD97alpha (L530) Antibody |
| Synonyms | CD97; CD97 antigen; Leukocyte antigen CD97; CD antigen CD97 |

This product is for research use only, not for use in human, therapeutic or diagnostic procedure.

Background

ADGRE5 (adhesion G protein-coupled receptor E5) encodes a member of the EGF-TM7 subfamily of adhesion G protein-coupled receptors, which mediate cell-cell interactions. These proteins are cleaved by self-catalytic proteolysis into a large extracellular subunit and seven-span transmembrane subunit, which associate at the cell surface as a receptor complex. The encoded protein may play a role in cell adhesion as well as leukocyte recruitment, activation and migration, and contains multiple extracellular EGF-like repeats which mediate binding to chondroitin sulfate and the cell surface complement regulatory protein CD55. Expression of ADGRE5 may play a role in the progression of several types of cancer. Alternatively spliced transcript variants encoding multiple isoforms with 3 to 5 EGF-like repeats have been observed for ADGRE5. This gene is found in a cluster with other EGF-TM7 genes on the short arm of chromosome 19.

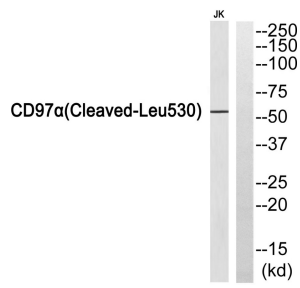
Recommended Dilution

WB: 1: 500 - 1: 2000

ELISA: 1: 5000

Not yet tested in other applications.

Images



Western blot analysis of CD97alpha (Cleaved-Leu530) Antibody. The lane on the right is blocked with the CD97alpha (Cleaved-Leu530) peptide.

Storage

-20°C for one year

501 Changsheng S Rd, Nanhu Dist, Jiaxing, Zhejiang, China

Tel: 86 21 31007137 | E-mail: save@bt-laboratory.com | www.bt-laboratory.com