

## Cleaved-CD97Beta (S531) Polyclonal Antibody

### Description

|                                |   |
|--------------------------------|---|
| <b>Product type</b>            | Primary Antibody  |
| <b>Code</b>                    | BT-AP01916  |
| <b>Host</b>                    | Rabbit  |
| <b>Isotype</b>                 | IgG   |
| <b>Size</b>                    | 20ul, 50ul, 100ul   |
| <b>Immunogen</b>               | The antiserum was produced against synthesized peptide derived from human CD97 beta. AA range:512-561 |
| <b>Mol wt</b>                  | 91869   |
| <b>Species reactivity</b>      | Human   |
| <b>Clonality</b>               | Polyclonal  |
| <b>Recommended application</b> | WB, ELISA   |
| <b>Concentration</b>           | 1 mg/ml   |
| <b>Full name</b>               | Cleaved-CD97beta (S531) Antibody  |
| <b>Synonyms</b>                | CD97; CD97 antigen; Leukocyte antigen CD97; CD antigen CD97   |

**This product is for research use only, not for use in human, therapeutic or diagnostic procedure.**

### Background

ADGRE5 (adhesion G protein-coupled receptor E5) encodes a member of the EGF-TM7 subfamily of adhesion G protein-coupled receptors, which mediate cell-cell interactions. These proteins are cleaved by self-catalytic proteolysis into a large extracellular subunit and seven-span transmembrane subunit, which associate at the cell surface as a receptor complex. The encoded protein may play a role in cell adhesion as well as leukocyte recruitment, activation and migration, and contains multiple extracellular EGF-like repeats which mediate binding to chondroitin sulfate and the cell surface complement regulatory protein CD55. Expression of ADGRE5 may play a role in the progression of several types of cancer. Alternatively spliced transcript variants encoding multiple isoforms with 3 to 5 EGF-like repeats have been observed for ADGRE5. This gene is found in a cluster with other EGF-TM7 genes on the short arm of chromosome 19.

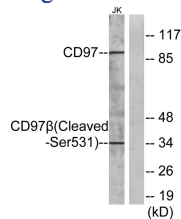
### Recommended Dilution

WB: 1: 500 - 1: 2000

ELISA: 1: 5000

Not yet tested in other applications.

### Images



Western blot analysis of lysates from Jurkat cells, treated with etoposide 25uM 24h, using CD97 beta (Cleaved-Ser531) Antibody. The lane on the right is blocked with the synthesized peptide.

### Storage

-20°C for one year