

Cleaved-COL1A2 (G1102) Polyclonal Antibody

Description

Product type	Primary Antibody
Code	BT-AP01917
Host	Rabbit
Isotype	IgG
Size	20ul, 50ul, 100ul
Immunogen	The antiserum was produced against synthesized peptide derived from human Collagen I alpha2. AA range:1053-1102
Mol wt	129288
Species reactivity	Human
Clonality	Polyclonal
Recommended application	WB, ELISA
Concentration	1 mg/ml
Full name	Cleaved-COL1A2 (G1102) Antibody
Synonyms	COL1A2; Collagen alpha-2(I) chain; Alpha-2 type I collagen

This product is for research use only, not for use in human, therapeutic or diagnostic procedure.

Background

COL1A2 encodes the pro-alpha2 chain of type I collagen whose triple helix comprises two alpha1 chains and one alpha2 chain. Type I is a fibril-forming collagen found in most connective tissues and is abundant in bone, cornea, dermis and tendon. Mutations in this gene are associated with osteogenesis imperfecta types I-IV, Ehlers-Danlos syndrome type VIIB, recessive Ehlers-Danlos syndrome Classical type, idiopathic osteoporosis, and atypical Marfan syndrome. Symptoms associated with mutations in COL1A2, however, tend to be less severe than mutations in the gene for the alpha1 chain of type I collagen(COL1A1) reflecting the different role of alpha2 chains in matrix integrity. Three transcripts, resulting from the use of alternate polyadenylation signals, have been identified for COL1A2.

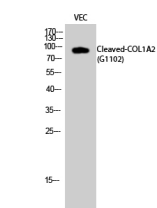
Recommended Dilution

WB: 1: 500 - 1: 2000

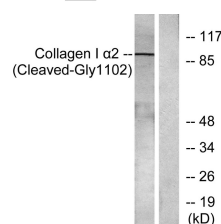
ELISA: 1: 10000

Not yet tested in other applications.

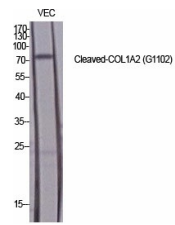
Images



Western Blot analysis of VEC cells using Cleaved-COL1A2 (G1102) Polyclonal Antibody diluted at 1:1000



Western blot analysis of lysates from Jurkat cells, treated with etoposide 25uM 24h, using Collagen I alpha2 (Cleaved-Gly1102) Antibody. The lane on the right is blocked with the synthesized peptide.



Western Blot analysis of various cells using Cleaved-COL1A2 (G1102) Polyclonal Antibody diluted at 1:1000

Storage

-20°C for one year

501 Changsheng S Rd, Nanhu Dist, Jiaxing, Zhejiang, China

Tel: 86 21 31007137 | E-mail: save@bt-laboratory.com | www.bt-laboratory.com