

Cleaved-COL3A1 (G1221) Polyclonal Antibody

Description

Product type	Primary Antibody
Code	BT-AP01918
Host	Rabbit
Isotype	IgG
Size	20ul, 50ul, 100ul
Immunogen	The antiserum was produced against synthesized peptide derived from human Collagen III alpha1. AA range:1172-1221
Mol wt	138564
Species reactivity	Human
Clonality	Polyclonal
Recommended application	WB, ELISA
Concentration	1 mg/ml
Full name	Cleaved-COL3A1 (G1221) Antibody
Synonyms	COL3A1; Collagen alpha-1(III) chain

This product is for research use only, not for use in human, therapeutic or diagnostic procedure.

Background

COL3A1 encodes the pro-alpha1 chains of type III collagen, a fibrillar collagen that is found in extensible connective tissues such as skin, lung, uterus, intestine and the vascular system, frequently in association with type I collagen. Mutations in COL3A1 are associated with Ehlers-Danlos syndrome types IV, and with aortic and arterial aneurysms. Two transcripts, resulting from the use of alternate polyadenylation signals, have been identified for COL3A1.

Recommended Dilution

WB: 1: 500 - 1: 2000

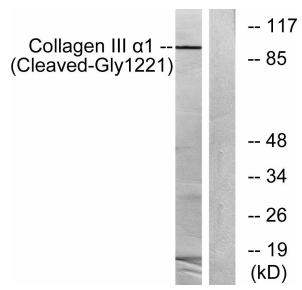
ELISA: 1: 10000

Not yet tested in other applications.

Images



Western Blot analysis of various cells using Cleaved-COL3A1 (G1221) Polyclonal Antibody



Western blot analysis of lysates from A549 cells, treated with etoposide 25uM 24h, using Collagen III alpha1 (Cleaved-Gly1221) Antibody. The lane on the right is blocked with the synthesized peptide.

Storage

-20°C for one year

501 Changsheng S Rd, Nanhu Dist, Jiaxing, Zhejiang, China

Tel: 86 21 31007137 | E-mail: save@bt-laboratory.com | www.bt-laboratory.com