

Cleaved-Factor B Bb (K260) Polyclonal Antibody

Description

Product type	Primary Antibody
Code	BT-AP01921
Host	Rabbit
Isotype	IgG
Size	20ul, 50ul, 100ul
Immunogen	The antiserum was produced against synthesized peptide derived from human CFAB Bb. AA range:241-290
Mol wt	85533
Species reactivity	Human, Mouse
Clonality	Polyclonal
Recommended application	WB, ELISA
Concentration	1 mg/ml
Full name	Cleaved-Factor B Bb (K260) Antibody
Synonyms	CFB; BF; BFD; Complement factor B; C3/C5 convertase; Glycine-rich beta glycoprotein; GBG; PBF2; Properdin factor B

This product is for research use only, not for use in human, therapeutic or diagnostic procedure.

Background

CFB (complement factor B) encodes complement factor B, a component of the alternative pathway of complement activation. Factor B circulates in the blood as a single chain polypeptide. Upon activation of the alternative pathway, it is cleaved by complement factor D yielding the noncatalytic chain Ba and the catalytic subunit Bb. The active subunit Bb is a serine protease which associates with C3b to form the alternative pathway C3 convertase. Bb is involved in the proliferation of preactivated B lymphocytes, while Ba inhibits their proliferation. CFB localizes to the major histocompatibility complex (MHC) class III region on chromosome 6. This cluster includes several genes involved in regulation of the immune reaction. Polymorphisms in CFB are associated with a reduced risk of age-related macular degeneration. The polyadenylation site of CFB is 421 bp from the 5' end of the gene for complement component 2.

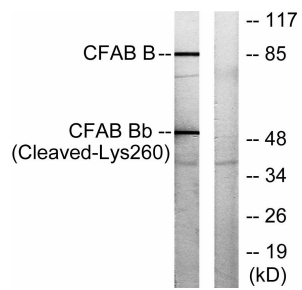
Recommended Dilution

WB: 1: 500 - 1: 2000

ELISA: 1: 20000

Not yet tested in other applications.

Images



Western blot analysis of lysates from K562 cells, treated with etoposide 25uM 1h, using CFAB Bb (Cleaved-Lys260) Antibody. The lane on the right is blocked with the synthesized peptide.

Storage

-20°C for one year

501 Changsheng S Rd, Nanhu Dist, Jiaxing, Zhejiang, China

Tel: 86 21 31007137 | E-mail: save@bt-laboratory.com | www.bt-laboratory.com