

Cleaved-Factor VII LC (R212) Polyclonal Antibody

Description

Product type	Primary Antibody
Code	BT-AP01922
Host	Rabbit
Isotype	IgG
Size	20ul, 50ul, 100ul
Immunogen	The antiserum was produced against synthesized peptide derived from human FA7. AA range:171-220
Mol wt	51594
Species reactivity	Human
Clonality	Polyclonal
Recommended application	WB, IHC-p, ELISA
Concentration	1 mg/ml
Full name	Cleaved-Factor VII LC (R212) Antibody
Synonyms	F7; Coagulation factor VII; Proconvertin; Serum prothrombin conversion accelerator; SPCA; Eptacog alfa

This product is for research use only, not for use in human, therapeutic or diagnostic procedure.

Background

F7 encodes coagulation factor VII which is a vitamin K-dependent factor essential for hemostasis. This factor circulates in the blood in a zymogen form, and is converted to an active form by either factor IXa, factor Xa, factor XIIa, or thrombin by minor proteolysis. Upon activation of the factor VII, a heavy chain containing a catalytic domain and a light chain containing 2 EGF-like domains are generated, and two chains are held together by a disulfide bond. In the presence of factor III and calcium ions, the activated factor then further activates the coagulation cascade by converting factor IX to factor IXa and/or factor X to factor Xa. Defects in F7 can cause coagulopathy. Alternative splicing results in multiple transcript variants encoding different isoforms that may undergo similar proteolytic processing to generate mature polypeptides.

Recommended Dilution

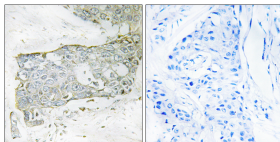
WB: 1: 500 - 1: 2000

IHC: 1: 100 - 1: 300

ELISA: 1: 20000

Not yet tested in other applications.

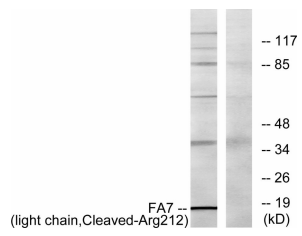
Images



Immunohistochemistry analysis of paraffin-embedded human breast carcinoma tissue, using FA7 (light chain, Cleaved-Arg212) Antibody. The picture on the right is blocked with the synthesized peptide.



Western Blot analysis of various cells using Cleaved-Factor VII LC (R212) Polyclonal Antibody



Western blot analysis of lysates from Jurkat cells, treated with eto 25uM 24h, using FA7 (light chain, Cleaved-Arg212) Antibody. The lane on the right is blocked with the synthesized peptide.

Storage

-20°C for one year

501 Changsheng S Rd, Nanhu Dist, Jiaxing, Zhejiang, China

Tel: 86 21 31007137 | E-mail: save@bt-laboratory.com | www.bt-laboratory.com