

Cleaved-GGT4 HC (T472) Polyclonal Antibody

Description

Product type	Primary Antibody
Code	BT-AP01928
Host	Rabbit
Isotype	IgG
Size	20ul, 50ul, 100ul
Immunogen	The antiserum was produced against synthesized peptide derived from human Gamma-glutamyltransferase 4. AA range:423-472
Mol wt	70467
Species reactivity	Human, Mouse, Rat
Clonality	Polyclonal
Recommended application	WB, ELISA
Concentration	1 mg/ml
Full name	Cleaved-GGT4 HC (T472) Antibody
Synonyms	GGT7; GGTL3; GGTL5; Gamma-glutamyltransferase 7; GGT 7; Gamma-glutamyltransferase-like 3; Gamma-glutamyltransferase-like 5; Gamma-glutamyltranspeptidase 7; Glutathione hydrolase 7

This product is for research use only, not for use in human, therapeutic or diagnostic procedure.

Background

GGT7 is a member of a gene family that encodes enzymes involved in both the metabolism of glutathione and in the transpeptidation of amino acids. Changes in the activity of gamma-glutamyltransferase may signal preneoplastic or toxic conditions in the liver or kidney. The gamma-glutamyltransferase 7 encoded by GGT7 consists of a heavy and a light chain, and it can interact with CT120, a plasma membrane-associated protein that is possibly involved in lung carcinogenesis.

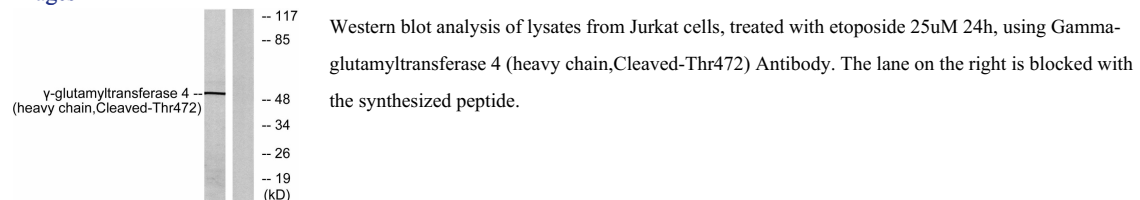
Recommended Dilution

WB: 1: 500 - 1: 2000

ELISA: 1: 10000

Not yet tested in other applications.

Images



Storage

-20°C for one year