

Cleaved-Integrin Alpha7 LC (E959) Polyclonal Antibody

Description

Product type	Primary Antibody
Code	BT-AP01932
Host	Rabbit
Isotype	IgG
Size	20ul, 50ul, 100ul
Immunogen	The antiserum was produced against synthesized peptide derived from human ITGA7. AA range:940-989
Mol wt	128929
Species reactivity	Human, Monkey
Clonality	Polyclonal
Recommended application	WB, ELISA
Concentration	1 mg/ml
Full name	Cleaved-Integrin alpha7 LC (E959) Antibody
Synonyms	ITGA7; Integrin alpha-7

This product is for research use only, not for use in human, therapeutic or diagnostic procedure.

Background

The protein encoded by ITGA7 belongs to the integrin alpha chain family. Integrins are heterodimeric integral membrane proteins composed of an alpha chain and a beta chain. They mediate a wide spectrum of cell-cell and cell-matrix interactions, and thus play a role in cell migration, morphologic development, differentiation, and metastasis. Integrin subunit alpha 7 functions as a receptor for the basement membrane protein laminin-1. It is mainly expressed in skeletal and cardiac muscles and may be involved in differentiation and migration processes during myogenesis. Defects in ITGA7 are associated with congenital myopathy. Alternatively spliced transcript variants encoding different isoforms have been noted for ITGA7.

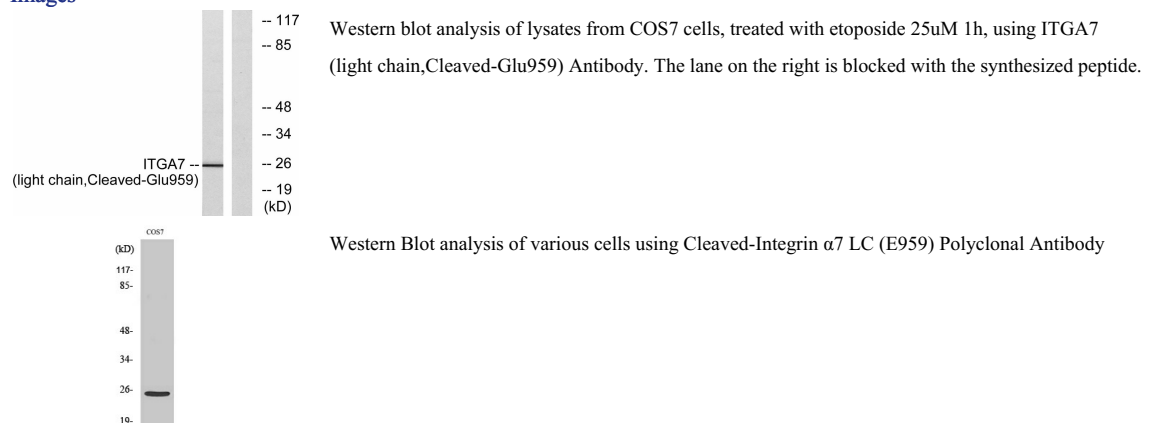
Recommended Dilution

WB: 1: 500 - 1: 2000

ELISA: 1: 40000

Not yet tested in other applications.

Images



Storage

-20°C for one year

501 Changsheng S Rd, Nanhu Dist, Jiaxing, Zhejiang, China

Tel: 86 21 31007137 | E-mail: save@bt-laboratory.com | www.bt-laboratory.com