

Cleaved-KLK11 (I54) Polyclonal Antibody

Description

Product type	Primary Antibody
Code	BT-AP01938
Host	Rabbit
Isotype	IgG
Size	20ul, 50ul, 100ul
Immunogen	The antiserum was produced against synthesized peptide derived from human Kallikrein-11. AA range:35-84
Mol wt	31059
Species reactivity	Human
Clonality	Polyclonal
Recommended application	WB, ELISA
Concentration	1 mg/ml
Full name	Cleaved-KLK11 (I54) Antibody
Synonyms	KLK11; PRSS20; TLSP; Kallikrein-11; hK11; Hippostasin; Serine protease 20; Trypsin-like protease

This product is for research use only, not for use in human, therapeutic or diagnostic procedure.

Background

Kallikreins are a subgroup of serine proteases having diverse physiological functions. Growing evidence suggests that many kallikreins are implicated in carcinogenesis and some have potential as novel cancer and other disease biomarkers. KLK11 is one of the fifteen kallikrein subfamily members located in a cluster on chromosome 19. Alternate splicing of KLK11 results in multiple transcript variants encoding distinct isoforms which are differentially expressed.

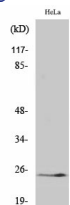
Recommended Dilution

WB: 1: 500 - 1: 2000

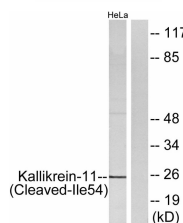
ELISA: 1: 10000

Not yet tested in other applications.

Images



Western Blot analysis of various cells using Cleaved-KLK11 (I54) Polyclonal Antibody



Western blot analysis of lysates from HeLa cells, treated with etoposide 25uM 24H, using Kallikrein-11 (Cleaved-Ile54) Antibody. The lane on the right is blocked with the synthesized peptide.

Storage

-20°C for one year

501 Changsheng S Rd, Nanhu Dist, Jiaxing, Zhejiang, China

Tel: 86 21 31007137 | E-mail: save@bt-laboratory.com | www.bt-laboratory.com