

Cleaved-KLK8 (V33) Polyclonal Antibody

Description

Product type	Primary Antibody
Code	BT-AP01939
Host	Rabbit
Isotype	IgG
Size	20ul, 50ul, 100ul
Immunogen	The antiserum was produced against synthesized peptide derived from human Neuropsin. AA range:14-63
Mol wt	28048
Species reactivity	Human
Clonality	Polyclonal
Recommended application	WB, ELISA
Concentration	1 mg/ml
Full name	Cleaved-KLK8 (V33) Antibody
Synonyms	KLK8; NRPN; PRSS19; TADG14; Kallikrein-8; hK8; Neuropsin; NP; Ovasin; Serine protease 19; Serine protease TADG-14; Tumor-associated differentially expressed gene 14 protein

This product is for research use only, not for use in human, therapeutic or diagnostic procedure.

Background

Kallikreins are a subgroup of serine proteases having diverse physiological functions. Growing evidence suggests that many kallikreins are implicated in carcinogenesis and some have potential as novel cancer and other disease biomarkers. KLK8 is one of the fifteen kallikrein subfamily members located in tandem in a gene cluster on chromosome 19. Kallikrein related peptidase 8 may be involved in proteolytic cascade in the skin and may serve as a biomarker for ovarian cancer. Alternate splicing of KLK8 results in multiple transcript variants encoding different isoforms.

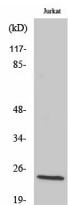
Recommended Dilution

WB: 1: 500 - 1: 2000

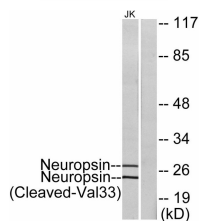
ELISA: 1: 10000

Not yet tested in other applications.

Images



Western Blot analysis of various cells using Cleaved-KLK8 (V33) Polyclonal Antibody



Western blot analysis of lysates from Jurkat cells, treated with etoposide 25uM 24h, using Neuropsin (Cleaved-Val33) Antibody. The lane on the right is blocked with the synthesized peptide.

Storage

-20°C for one year

501 Changsheng S Rd, Nanhu Dist, Jiaxing, Zhejiang, China

Tel: 86 21 31007137 | E-mail: save@bt-laboratory.com | www.bt-laboratory.com