

## Cleaved-Lamin A (D230) Polyclonal Antibody

### Description

|                                |  |
|--------------------------------|--|
| <b>Product type</b>            | Primary Antibody   |
| <b>Code</b>                    | BT-AP01940   |
| <b>Host</b>                    | Rabbit   |
| <b>Isotype</b>                 | IgG  |
| <b>Size</b>                    | 20ul, 50ul, 100ul  |
| <b>Immunogen</b>               | The antiserum was produced against synthesized peptide derived from human Lamin A. AA range: 181-230 |
| <b>Mol wt</b>                  | 74139  |
| <b>Species reactivity</b>      | Human, Mouse, Rat  |
| <b>Clonality</b>               | Polyclonal   |
| <b>Recommended application</b> | WB, IHC-p, ELISA   |
| <b>Concentration</b>           | 1 mg/ml  |
| <b>Full name</b>               | Cleaved-Lamin A (D230) Antibody  |
| <b>Synonyms</b>                | LMNA; LMN1; Prelamin-A/C   |

**This product is for research use only, not for use in human, therapeutic or diagnostic procedure.**

### Background

The nuclear lamina consists of a two-dimensional matrix of proteins located next to the inner nuclear membrane. The lamin family of proteins make up the matrix and are highly conserved in evolution. During mitosis, the lamina matrix is reversibly disassembled as the lamin proteins are phosphorylated. Lamin proteins are thought to be involved in nuclear stability, chromatin structure and gene expression. Vertebrate lamins consist of two types, A and B. Alternative splicing results in multiple transcript variants. Mutations in LMNA lead to several diseases: Emery-Dreifuss muscular dystrophy, familial partial lipodystrophy, limb girdle muscular dystrophy, dilated cardiomyopathy, Charcot-Marie-Tooth disease, and Hutchinson-Gilford progeria syndrome.

### Recommended Dilution

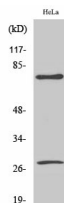
WB: 1: 500 - 1: 2000

IHC: 1: 100 - 1: 300

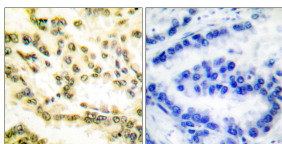
ELISA: 1: 10000

Not yet tested in other applications.

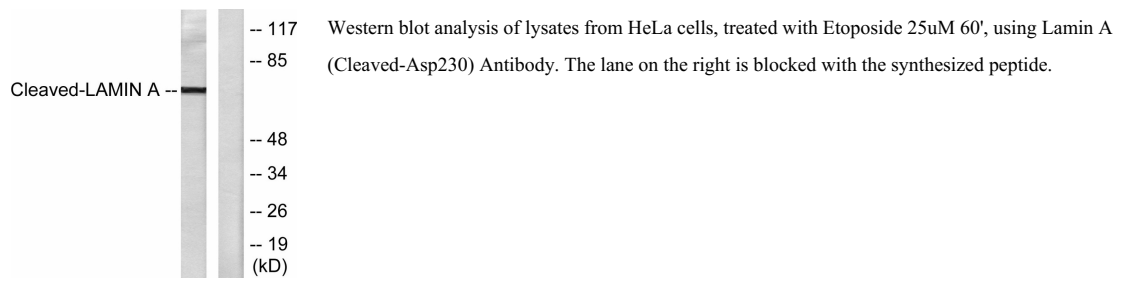
### Images



Western Blot analysis of various cells using Cleaved-Lamin A (D230) Polyclonal Antibody



Immunohistochemistry analysis of paraffin-embedded human lung carcinoma tissue, using Lamin A (Cleaved-Asp230) Antibody. The picture on the right is blocked with the synthesized peptide.



### Storage

-20°C for one year

501 Changsheng S Rd, Nanhu Dist, Jiaxing, Zhejiang, China

Tel: 86 21 31007137 | E-mail: [save@bt-laboratory.com](mailto:save@bt-laboratory.com) | [www.bt-laboratory.com](http://www.bt-laboratory.com)