

Cleaved-MASP-1 HC (R448) Polyclonal Antibody

Description

Product type	Primary Antibody
Code	BT-AP01942
Host	Rabbit
Isotype	IgG
Size	20ul, 50ul, 100ul
Immunogen	The antiserum was produced against synthesized peptide derived from human MASP1. AA range:399-448
Mol wt	79259
Species reactivity	Human
Clonality	Polyclonal
Recommended application	WB, ELISA
Concentration	1 mg/ml
Full name	Cleaved-MASP-1 HC (R448) Antibody
Synonyms	MASP1; CRARF; CRARF1; PRSS5; Mannan-binding lectin serine protease 1; Complement factor MASP-3; Complement-activating component of Ra-reactive factor; Mannose-binding lectin-associated serine protease

This product is for research use only, not for use in human, therapeutic or diagnostic procedure.

Background

MASP1 encodes a serine protease that functions as a component of the lectin pathway of complement activation. The complement pathway plays an essential role in the innate and adaptive immune response. The encoded protein (mannan binding lectin serine peptidase 1) is synthesized as a zymogen and is activated when it complexes with the pathogen recognition molecules of lectin pathway, the mannose-binding lectin and the ficolins. Mannan binding lectin serine peptidase 1 is not directly involved in complement activation but may play a role as an amplifier of complement activation by cleaving complement C2 or by activating another complement serine protease, MASP-2. Mannan binding lectin serine peptidase 1 is also able to cleave fibrinogen and factor XIII and may be involved in coagulation. A splice variant of this gene which lacks the serine protease domain functions as an inhibitor of the complement pathway. Alternate splicing results in multiple transcript variants.

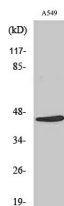
Recommended Dilution

WB: 1: 500 - 1: 2000

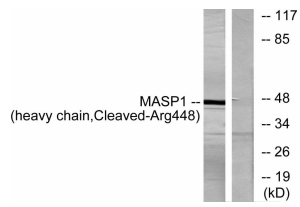
ELISA: 1: 10000

Not yet tested in other applications.

Images



Western Blot analysis of various cells using Cleaved-MASP-1 HC (R448) Polyclonal Antibody



Storage

-20°C for one year

501 Changsheng S Rd, Nanhu Dist, Jiaxing, Zhejiang, China

Tel: 86 21 31007137 | E-mail: save@bt-laboratory.com | www.bt-laboratory.com