

Cleaved-MMP-10 (F99) Polyclonal Antibody

Description

Product type	Primary Antibody
Code	BT-AP01944
Host	Rabbit
Isotype	IgG
Size	20ul, 50ul, 100ul
Immunogen	The antiserum was produced against synthesized peptide derived from human MMP10. AA range:80-129
Mol wt	54151
Species reactivity	Human
Clonality	Polyclonal
Recommended application	WB, ELISA
Concentration	1 mg/ml
Full name	Cleaved-MMP-10 (F99) Antibody
Synonyms	MMP10; STMY2; Stromelysin-2; SL-2; Matrix metalloproteinase-10; MMP-10; Transin-2

This product is for research use only, not for use in human, therapeutic or diagnostic procedure.

Background

MMP10 encodes a member of the peptidase M10 family of matrix metalloproteinases (MMPs). Proteins in this family are involved in the breakdown of extracellular matrix in normal physiological processes, such as embryonic development, reproduction, and tissue remodeling, as well as in disease processes, such as arthritis and metastasis. The encoded preproprotein is proteolytically processed to generate the mature protease. This secreted protease (matrix metalloproteinase 10) breaks down fibronectin, laminin, elastin, proteoglycan core protein, gelatins, and several types of collagen. MMP10 is part of a cluster of MMP genes on chromosome 11.

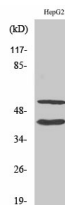
Recommended Dilution

WB: 1: 500 - 1: 2000

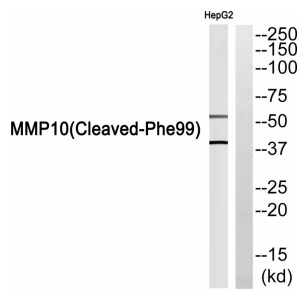
ELISA: 1: 40000

Not yet tested in other applications.

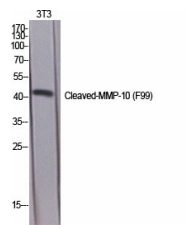
Images



Western Blot analysis of HepG2 cells using Cleaved-MMP-10 (F99) Polyclonal Antibody diluted at 1:1000



Western blot analysis of MMP10 (Cleaved-Phe99) Antibody. The lane on the right is blocked with the MMP10 (Cleaved-Phe99) peptide.



Western Blot analysis of various cells using Cleaved-MMP-10 (F99) Polyclonal Antibody diluted at 1:1000

Storage

-20°C for one year

501 Changsheng S Rd, Nanhu Dist, Jiaxing, Zhejiang, China
 Tel: 86 21 31007137 | E-mail: save@bt-laboratory.com | www.bt-laboratory.com